

Budget Request Hits \$3,300,000 in '53-'55 At Woman's College

Amount Stated Includes New Buildings, Salaries, Renovation, Equipment

Budget requests for the Woman's College for 1953-55 amount to over \$3,300,000 according to a statement released by University President Gordon Gray.

These biennial budget requests were made before the Advisory Budget Commission after having originated in the departments, schools and colleges and processed through regular committee channels where they received careful screening and considered thought.

The Advisory Budget Commission considered Woman's College requests and those of over 50 other state agencies and reported its recommendations to the state legislature in January, 1953.

Total permanent improvements asked for new security and safety measures for the campus, repairs and renovation of Woman's and Kirkland Dormitories (or as an alternative, a new dormitory), the repair and renovation of Spencer Dining Hall, of the old Library

(Continued on Page Eight)

Inter-Faith Forum Date Set 'Religion in Education'

The Inter-Faith Forum, formerly called Religious Emphasis Week, will extend February 8 through 11 this year under the topic, "Religion in Higher Education."

Ministers, invited by the religious groups, will conduct evening discussions in the halls.

Faculty panels will present subjects of academic and religious interest and inter-denominational worship services will be held.

Ministers prominent in the field of religious education will conduct the opening panel on Monday afternoon, and a lecture will be in Aycock Monday night.

The opening service, on Sunday, February 8, will be the University Sermon sponsored by the Sophomore Class. Speakers for these occasions will be announced in the near future.

The Inter-Faith Forum, a highlight of the religious activities program on campus, is organized and sponsored by the Inter-Faith Council with the full cooperation of all denominational groups, the YWCA and the Lecture Series Committee.

Each sub-committee has a student chairman and one or more faculty consultants. The directors and advisers from church groups are assisting the committees in the planning and development program.

Students Will Evaluate Teaching In Spring Through Rating Sheets

In the spring of 1953 students here at North Carolina's college for women will be looking at their teachers with a critical eye and putting a mark down for what they see.

This kind of student evaluation of teaching came into being in 1951 when Woman's College students were presented the idea by the campus branch of the National Students Association.

The student-perpetuated idea went before the student legislature which appointed a committee of a faculty and students to investigate such an evaluation.

This group reported their findings to the legislature and then to the Chancellor, who, in turn, appointed a group of faculty and students to further study and now the process has been turned over to a committee of students who have faculty aid only in that they consult the faculty committee on evaluation when they need information as to how to proceed in getting data for their program.

Actual evaluation will consist of forms and instruments listing qualifications of a teacher which will be rated anonymously by the students, statistics compiled by a

CALENDAR of College Events—1953

January - June	
Examinations	January 19-24
Inter-Faith Forum	February 8-11
Gym Meet (tent.)	February 28
Arts Forum	March 19-21
Easter Concert	March 29
State Music Contest	April 21-24
Dolphin-Seal Pageant	April 23-25
May Day	May 2
Examinations	May 23-29
Alumnae Day	May 30
Class Day	May 30
Commencement	May 30-June 1

Bureau Furnishes News of WCUNC

The saying, "It pays to advertise," is proven to be true by the accomplishments of the News Bureau, a part of the public relations department of the college.

The bureau has made the state familiar with the college by getting out an average of 600 to 800 news stories and 250 pictures each year concerning the college, faculty, and students. It has contact with 40 dailies, five syndicates, 130 weeklies, 60 out of state papers and 10 radio stations. Special articles are sent to magazines from time to time.

An important function of the bureau is to report to the state on this branch of its educational system. It tells of the work, progress, needs, and services of the college.

The main work consists of distributing news about the writings and research of faculty members, honors and outstanding activities of the students, and the overall college program.

Albert A. Wilkinson has been director of the news bureau since 1947.

Hall of Fame Portraits Hang in Administration

A hall of fame has been created in the first floor corridor of the Administration Building at Woman's College.

Portraits of Dr. McIver, Dr. Foust, and Dr. Jackson now hang there.

A committee was appointed by Chancellor E. K. Graham to find a suitable place to hang the likenesses of President Charles D. McIver, President Julius I. Foust, and Chancellor Walter C. Jackson. This committee decided that no place could be more appropriate for the portraits than the main hall of Administration where these leaders had spent countless hours.

Dr. McIver's portrait had previously hung on a wall in the chancellor's office; Dr. Foust's above an entrance landing in Aycock; and Dr. Jackson's in the Green Room of the Alumnae House.

Faculty Criteria Used As Promotion Basis

Chancellor Comments on Value of Qualifications

Something new is taking place in the faculty ranks at Woman's College.

The usual schoolroom procedure has been reversed and the teacher is getting a grade.

Faculty are being evaluated according to criteria for promotions and appointments approved by the Faculty Advisory Committee and recommended to the College Chancellor the past April, 1952.

The "report card" is a faculty evaluation form based on the criteria set up by the advisory group and it is already in use.

In submitting recommendations regarding staff members, department chairmen are required to make specific confidential judgments on specific qualifications of the individuals involved.

Divided into four main areas, teaching ability, professional attainments, valued personal traits, and leadership and service, the criteria are applied to instructors, assistant professors, associate professors and full professors. Increasing stress is laid on the required qualifications as the faculty rank advances.

The significance of such a plan is primarily to foster better teaching and to give every teacher an equal and fair chance at promotion.

Chancellor Graham in making a statement about the aim and function of the criteria says:

"The purpose of the criteria for faculty promotions and appointments, which were approved by the faculty last May and recommended to the administration in the Spring of 1952, are designed to focus attention on certain basic values which are to be kept clearly in mind in connection with promotions and appointments within the four ranks of the faculty.

"It is recognized that human beings cannot be measured by any arbitrary standard, and that a wide range of talents and personal qualifications is not only to be expected but also to be encouraged in a high spirited and intellectually independent community of teachers and scholars. We recognize our obligation to look for excellence within a dimension sufficiently broad to encompass the high-spirited and intellectually independent, yet sufficiently explicit in terms of values to give substance and focus to our commitment to excellence.

"In addition to completing the form, the department head submits such statements and supporting materials as he or she feels may be pertinent to the case under consideration. Recommendations are regularly reviewed with senior members of the Faculty Advisory Committee, viz., those of full professional rank, who are therefore, not subject to further promotion themselves, before final action is taken."

Infirmiry Features New Facilities for Patients

Remember trudging through the rain and mud to get to the infirmiry?

Remember the endless hours you spent sitting in the waiting room, dreading the moment when the nurse would call, "Next."

The Woman's College student of the near future will be tripping gaily to the New Infirmiry in Peabody Park next door to Mendenhall . . . equipped with a modern laboratory, X-ray machine, and a kitchen.

In addition to a sun deck for girls well enough to get up for a few hours, the new infirmiry also boasts a recreation room, complete with soft easy chairs, and magazines.

Since recently discovered antibiotics have greatly reduced the bed patients at Woman's College, the new infirmiry will have just as many beds as the old one, but oh, what beds!

General Education Plans Experimental Courses, Tests Teaching Effectiveness

Student Group Meets To Discuss Informally GE Program Objectives

Humanities Lecturer From Chicago at WC

An exchange has been made. A general education professor from Chicago comes to Woman's College, while a Woman's College professor goes to Harvard to study general education.

For the first time in the history of Woman's College, a lecturer in humanities has put in his appearance on the faculty.

Dr. Mefer Isenberg comes to the College as a visiting professor in the department of classics, while Dr. Frank A. Laine is on leave of absence studying under the general education program at Harvard.

Dr. Isenberg, from the University of Chicago, is also a member of the Woman's College general education committee on the humanities.

Woman's College faculty, students, and alumnae are designing a tailor-made General Education Program to suit Woman's College.

At the present time the committees on general education are engaged in planning courses in the humanities, social studies, and natural sciences and are exploring the possibility of offering these experimentally within the college curriculum next September.

Secondly, they are planning to inaugurate a program that will measure in various ways the effectiveness of the present curriculum and of the experimental courses of study which will be offered.

There is no disposition on the part of these groups, states Dr. Marc Friedlaender, chairman of general education, to follow the



STUDENT VOLUNTEERS . . . donate blood for armed forces use on battlefield . . . May 6, 1952—257 students and faculty exceeded the college quota when they gave blood to the Red Cross Bloodmobile operation at Woman's College

pattern of any other college. The plan is to develop a program of teaching that represents Woman's College thinking and best educates Woman's College students.

Out of 233 teaching faculty, 78 professors have already been actively engaged in the business of general education by serving on committees.

A student group, which has been in session once with the general education steering committee, began meeting last spring to discuss informally the problems of gen-

(Continued on Page Eight)

Dean Taylor Will Be 1952-53 Arts Forum Committee Chairman

Miss Katherine Taylor, dean of students, accepted appointment the week of October 31 as chairman of the Arts Forum Committee for 1952-53, and Jean Hollinger '53, became student chairman of the group, following action by Chancellor Edward K. Graham.

Each of the participating arts is represented by a member of the faculty, who will organize a sub-committee within his or her area to develop plans for the Forum.

Two members of the student body will be selected from each area by the area sub-committees. Customarily, each area sub-committee has selected a representative from the Junior Class and one from the Senior Class.

In addition to the four faculty members at large now appointed to the Arts Forum Committee, additional members may be added within the discretion of Miss Taylor and her committee.

Miss Taylor succeeds Dr. John Courtney who has joined the faculty of the New Jersey College for Women.

The caller wanted to be connected with Spinster Hall.

Social Science Forum Explores Tensions In Middle East

Forum Reduced to One Day With Panels, Round Tables

The Middle East, which easily might become either the dynamite cap to world explosion or the keystone to world peace, was discussed November 21 at a one-day session of the annual Harriet Elliott Social Science Forum at Woman's College.

Under the general topic, "Tensions in the Middle East," three guest speakers were heard at morning, afternoon, and evening sessions.

Moderator for the forum was Dr. Cornelius Willem de Kiewiet, expert on British Foreign policy, and president of Rochester University.

With him was Professor Jacob C. Hurewitz, professor of government in the Near and Middle East Studies Program at Columbia University, and Professor T. Cuyler Young, professor of Persian language and history at Princeton University, and editor of *Near Eastern Culture and Society*.

Delegations of students and faculty members from many colleges and universities attended.

Chancellor Edward K. Graham opened the morning forum.

Held annually as a memorial to the late Dean Elliott and to promote discussion and understanding of social affairs on a world scale, the forum this year was restricted to one day instead of the usual three.

Chancellor Edward K. Graham opened the morning forum.

Held annually as a memorial to the late Dean Elliott and to promote discussion and understanding of social affairs on a world scale, the forum this year was restricted to one day instead of the usual three.

Chancellor Edward K. Graham opened the morning forum.

Held annually as a memorial to the late Dean Elliott and to promote discussion and understanding of social affairs on a world scale, the forum this year was restricted to one day instead of the usual three.

College Ranks High In U. S. Universities

Warrants Recognition By Leading Associations, Honorary Fraternities

Woman's College ranks high among American Universities and Colleges but just where it is impossible to evaluate.

No criteria have ever been successfully established to rate institutions of higher learning though many agencies, including the U. S. Government, have attempted it.

A Gallup Poll might be able to record a college's standing by organizations which recognize it with membership.

Leading groups of which the Woman's College is a member include: Southern Association of Colleges and Secondary Schools; Association of American Colleges; American Council on Education; Southern Association of Colleges for Women; North Carolina College Conference. Also Woman's College is on the approved list of the Association of American Universities.

Woman's College graduates are also eligible for membership in the American Association of University Women.

The 10 honorary and scholastic organizations which have chapters here are: Phi Beta Kappa, general scholarship; Phi Kappa Lambda, music; Sigma Delta Pi, Spanish; Tau Psi Omega, French; Delta Pi Epsilon, business education; Alpha Psi Omega, drama; Phi Alpha Theta, history; Omicron Nu, home economics; Alpha Kappa Delta, sociology; and Beta Beta, biology.

The profits received from book stores, cafeterias, and certain other specified kinds of merchandising will be established in trust funds and grants-in-aid.

According to the act passed, there will be on each campus of the University a Campus Store Committee which will be advisory to the assistant-controller-business manager.

Three students appointed by the president of the student body and three faculty members appointed by the Chancellor will constitute the committee.

The Campus Stores Committee is to meet once a month, at which time the managers of the campus stores will be present. The committees will entertain complaints, criticisms, and suggestions from the students through the student representatives and those of the faculty.

The awarding of grants-in-aid will be based on character, scholarship, leadership and will be made in compliance with all regulations of the individual institutions of the Consolidated University.

The awarding of grants-in-aid will be based on character, scholarship, leadership and will be made in compliance with all regulations of the individual institutions of the Consolidated University.

The awarding of grants-in-aid will be based on character, scholarship, leadership and will be made in compliance with all regulations of the individual institutions of the Consolidated University.

Educational Circles Hit With Controversy On Teacher Education

Press Reaction Comes From Editorial Boards; Educators Object

The education of teachers which reaches into every school and child life in North Carolina has become a live-wire issue in state educational circles.

Controversy broke loose in May, 1952, when Chancellor E. K. Graham presented the debated question to the North Carolina Editorial Writer's Conference in Chapel Hill.

The issue is one of the most controversial ones to have arisen in North Carolina education in recent years.

Press reaction has been widespread coming from the editorial and reportorial pens of the larger newspapers in the state as well as many smaller ones.

Further significance was added to the dispute recently when Dr. Graham, speaking for the Central Committee on Cooperative Research, introduced the problem at the North Carolina College Conference in Winston-Salem, November 7.

Recommendations from the committee were:

"1. That the College Conference go on record as favoring a review of certification requirements as they relate to the education of public school teachers, a review directed initially toward certification requirements for teachers in the elementary schools.

2. That the Conference recommend to the State Superintendent of Public Instruction and the Board of Education (a) the establishment of an Advisory Committee from the Colleges and Universities, if, in their judgment, such a committee would be helpful, and, if such an advisory committee should be desired by the State Superintendent and the Board; (b) that it be consulted regarding the review of teacher certification requirements; and (c) continuation of the advisory committee as a means of direct counsel to the State Superintendent of Public Instruction, in matters of policy relating to teacher education."

Both recommendations were defeated by conference members.

(Continued on Page Eight)

Campus Stores Groups Initiated in University

The Campus Stores Committee is putting in an appearance at Woman's College as the result of a University Board of Trustees decision.

In May of 1952 the Board of Trustees of the Consolidated University of North Carolina voted unanimously to set up rules and regulations controlling the merchandising practices on the campuses of the three branches of the University.

The profits received from book stores, cafeterias, and certain other specified kinds of merchandising will be established in trust funds and grants-in-aid.

According to the act passed, there will be on each campus of the University a Campus Store Committee which will be advisory to the assistant-controller-business manager.

Three students appointed by the president of the student body and three faculty members appointed by the Chancellor will constitute the committee.

The Campus Stores Committee is to meet once a month, at which time the managers of the campus stores will be present. The committees will entertain complaints, criticisms, and suggestions from the students through the student representatives and those of the faculty.

The awarding of grants-in-aid will be based on character, scholarship, leadership and will be made in compliance with all regulations of the individual institutions of the Consolidated University.

The awarding of grants-in-aid will be based on character, scholarship, leadership and will be made in compliance with all regulations of the individual institutions of the Consolidated University.

The awarding of grants-in-aid will be based on character, scholarship, leadership and will be made in compliance with all regulations of the individual institutions of the Consolidated University.

The awarding of grants-in-aid will be based on character, scholarship, leadership and will be made in compliance with all regulations of the individual institutions of the Consolidated University.

The awarding of grants-in-aid will be based on character, scholarship, leadership and will be made in compliance with all regulations of the individual institutions of the Consolidated University.

The awarding of grants-in-aid will be based on character, scholarship, leadership and will be made in compliance with all regulations of the individual institutions of the Consolidated University.

The awarding of grants-in-aid will be based on character, scholarship, leadership and will be made in compliance with all regulations of the individual institutions of the Consolidated University.

The awarding of grants-in-aid will be based on character, scholarship, leadership and will be made in compliance with all regulations of the individual institutions of the Consolidated University.

The awarding of grants-in-aid will be based on character, scholarship, leadership and will be made in compliance with all regulations of the individual institutions of the Consolidated University.

A Definition

What is it that makes the Woman's College unique?

A man in Chapel Hill asked the question one day of a Woman's College alumna. What explains the fine spirit at Woman's College? What binds the loyalty of students and alumnae in so unusual a fashion? Its handsome buildings? Its well-rounded course of study? Its student government program? Its excellent faculty? Its distinction of size and standards?

No one of these, he thought. Perhaps all of them together? "I believe," he finally said, a man who knows many colleges and universities, "that the spirit of the Woman's College was engendered with its first faculty — men and women of such distinction that they could have held posts anywhere. Yet they chose to do the spade work in a great and different adventure, following the lead of Charles Duncan McIver, a man with tremendous vision." He paused, then added thoughtfully, "That kind of spirit grows and bears fruit of the same excellence."

"Why do I want my daughter to go to the Woman's College?" a North Carolina mother asked, and in reply to her own question said,

"Wherever I go in North Carolina I find that women who are leaders in the community, who give themselves most generously in public service as well as in their homes, are most often alumnae of the Woman's College."

Why did Anna Howard Show insist on returning to Woman's College to give a Commencement address when she had been twice before, and when her physician advised against it? To her protesting friends she said, simply,

"Have you ever been there?"

In a North Carolina town a group of civic leaders met to appoint a chairman of a committee vital to the welfare of the city.

"Appoint an alumna of the Woman's College," the leader urged.

What constitutes the unique spirit of this college?

Woman's College was established out of a great need. North Carolina had lost much of its leadership in the Civil War. Leadership could come only with educated citizens. Educated citizens could come only with educated mothers and trained teachers. North Carolina, therefore, must give its women opportunity for the best education possible.

North Carolina did, though reluctantly at the time. But once the plunge was made, once the money was appropriated, once the ground broken, once the first class of students registered, the need was fulfilled beyond the dreams of the believers. Soon the nightmares of the dubious were quieted — unless they returned to haunt them as buildings mushroomed, faculty multiplied, student enrollment sky-rocketed.

Established because Charles Duncan McIver appreciated the need, Woman's College has consecrated itself to the fulfillment of that need, and in so doing has rendered incalculable service to North Carolina.

So, we have, first, Service.

A college dedicated to the service of its state could be only a democratic institution, and Woman's College is, by student designation, "Distinguished for its Democracy." Its alumnae are proud that students from every economic level, from the largest city and the smallest community, from every religious faith merge at the Woman's College into an integrated whole. They are proud that its only sororities or fraternities are scholastic and honorary ones. Democracy — where every student has equal opportunity to develop her own talents.

Service — democracy — made more vivid and lasting by the great leaders who believed in the free way of life and the responsibility to perpetuate it. One of the rare people attracted to the Woman's College and whose life has gone into its making was Harriet Wiseman Elliott, teacher and dean of women. She, too, had a vision. It was a vision of the whole woman. The woman strong in mind, in character and in body. Miss Elliott was a pioneer in her dreaming. A dynamic force in action.

"Wake up! Get busy! Take your place in the world! Be strong! Be useful! Be WOMEN!" So she urged the students, prodding them here, nudging them there, weighing them, testing them, striking more and more restrictions from their routine, adding more and more opportunities for growth, never relaxing in her determination to enlarge their horizon and shape them to assume a responsible place in it. And steadily beaming approval, always encouraging, compressing her creed into the two words used long before and often, but that have become a symbol of student life at Woman's College — responsible freedom.

Stout hearts — McIver, Elliott. Through the years there have been more. Dr. Walter Clinton Jackson told the graduating class of 1950, when he was retiring as Chancellor,

"I believe that the greatest thing in the world is love. You will miss the real joy of living if you do not come to know and feel that all men are children of the one good and eternal Father."

Every year on Founder's Day, 26,000 alumnae join the college in reading the 13th Chapter of First Corinthians, the Bible passage that through Dr. McIver's preference for it, and Dr. Jackson's living exemplification of it, has become peculiarly a part of college tradition:

"Though I speak with the tongues of men and of angels, and have not love, I become as sounding brass and tinkling cymbals . . ."

Another picture comes to those trying to define the Woman's College — a tall, slightly stooped, determined man, fighting for appropriations in the halls of the legislature, and never taking no for an answer. Holding fast to the small, already over-crowded plant that he inherited from Dr. McIver, battling through economic depression, discouragement, apathy, but always setting his jaw and demanding what was necessary to keep buildings going up to house the ever-increasing demand for admission, Julius I. Foust added stubborn determination and fight.

Service — democracy — responsible freedom — love — determination.

Two years ago Edward Kidder Graham, the new chancellor of the Woman's College, studied a report given by Dr. McIver to his Board of Directors, shortly after the institution was opened. This report, in part, has since been printed as "The Real Worth of a College."

Dr. Graham was searching for the answer to the same questions posed by the man at Chapel Hill, to the vision caught by the mother of the prospective student, to the assurance of the civic leader in the North Carolina town. What was this college he had come home to North Carolina to serve as Chancellor? What was this spirit that had in 60 short years catapulted a dream into the reality of the largest residential woman's college in the United States?

What, as he looked from his office window upon the piles of brick and steel being shaped into a breath-taking building

Placement of Senior Class of 1952

By Departments	
ART—(15)	FRENCH—(7)
Teachers—4	Government—2
Draftsmen—2	Teachers—3
Tech. Illustrators—3	Secretaries—1
Graduate Students—4	Graduate Students—1
Homemakers—2	(Out of State—2)
(Out of State—5)	
BIOLOGY—(26)	GRAM GRADE—(20)
Teachers—10	Teachers—17
Lab. Technicians—8	Homemakers—2
*Graduate Students—5	Graduate Students—1
Airline Hostesses—1	(Out of State 5)
Pre-Med—1	
Homemaker—1	HISTORY—(14)
(Out of State—6)	Teachers—6
B. S. S. A.—(56)	Secretaries—3
Secretaries—14	Graduate Students—4
Retailing—2	Personnel—1
Bus. with Father—1	(Out of State—5)
Homemaker—1	
Overseas—G'many—1	HOME EC.—(60)
(Out of State—12)	Teachers—36
	Home Dem. Agents—9
CHEMISTRY—(3)	Dietitians—2
Teacher—1	Research—1
Chemist—2	Kindergarten—1
(Out of State—2)	Retailing—2
	Graduate Students—3
ECONOMICS—(1)	Homemakers—6
Not interested—1	(Out of State—12)
(Out of State—1)	
ENGLISH—(43)	MATH.—(10)
Teachers—23	Teachers—5
**Journalism—4	Computers—3
Graduate Students—4	Homemakers—1
Drama, Radio, TV—2	General—1
Library—2	(Out of State—4)
Secretary—2	
Homemakers—3	MUSIC—(12)
Retailing—2	Teachers—9
Personnel—1	Clerical—1
(Out of State—10)	Miss N. C.—1
MISC.—(12)	(and teacher)
	Married—1
	(Out of State—2)
	(Foreign—1—England)
	PRIMARY—(58)
	Teachers—55
	Homemakers—2
	Graduate Students—1
	(Out of State—6)
	Foreign—1—Hawaii
	PHYSICAL ED.—(23)
	Teachers—12
	Hosp. & Civ. Rec.—3
	Graduate Students—6
	Homemaker—1
	At Home—1
	(Out of State—12)
	PHYSICS—(3)
	Physicist—3
	(Out of State—2)
	PSYCHOLOGY—(6)
	Secretaries—3
	Personnel—1
	Government—1
	Graduate Student—1
	(Out of State—2)
	SOCIOLOGY—(16)
	Caseworkers—10
	Secretaries—1
	Graduate Students—1
	Tech. Illustrators—1
	Tech. Assistant—1
	Homemakers—2
	(Out of State—6)
	SPANISH—(7)
	Teachers—5
	Government—1
	Air Corp.—1
	(Out of State—3)
	NOT. REG.—(12)
	MISC.—(12)
	TOTAL—404
	*Fellowship—Smith
	College
	**Editorial Asst. American Council on Education, Washington, D. C.

.. CAMPUS COGS ..

Each year the greater part of the funds raised by Service League's Campus Purse Drive is a half. In 1937 the Ishikawa family sailed for England to make their home there until 1939. While in London, Yoko attended St. Dunstan, a small private elementary school for girls. Then it came back to Yokohama for Yoko and her family until 1945 when they were evacuated to the interior. The living and working with girls from England, Denmark, Germany, and India. This year the campus plays host to Yoko Ishikawa of Tokyo, Japan.

Yoko has said good-bye to all that is familiar to her in order to come here to live and learn at the Woman's College for the year. She is here to show the students and to tell them of her native country, and to take back memories and stories of America.

You may see her smile and when you do, give her a welcome and a cheery "ohio" (translated: good morning!)

It costs over \$1100 annually for a student to be in college, so that for every dollar a student puts in, the State of North Carolina adds over 90 cents.

Last year, not counting the new buildings, it took \$2,658,811 for maintenance alone of this campus.

WC STATISTICS	
It costs over \$1100 annually for a student to be in college, so that for every dollar a student puts in, the State of North Carolina adds over 90 cents.	
Last year, not counting the new buildings, it took \$2,658,811 for maintenance alone of this campus.	

Student Enrollment by States

52-53	51-52	FOREIGN COUNTRIES	52-53	51-52
Alabama	2	Aruba, N. W. I.	2	
Connecticut	12	Belgium	1	1
Delaware	1	Brazil	3	2
Dist. of Columbia	10	Canada	1	2
Florida	13	Chile	1	1
Georgia	21	Colombia	1	1
Illinois	1	Cuba	1	2
Indiana	2	Denmark	1	1
Kansas	2	Iran	1	2
Louisiana	1	Japan	1	
Maine	1	Venezuela	1	
Maryland	21			
Massachusetts	11			
Michigan	1			
Mississippi	1			
Missouri	1			
New Hampshire	1			
New Jersey	27			
New York	26			
Ohio	1			
Oregon	1			
Pennsylvania	14			
Rhode Island	1			
South Carolina	35			
Tennessee	8			
Texas	2			
Virginia	51			
West Virginia	14			
	280			
	278			

program, and on the alert and eager faces of 2500 students going to and from classes — what is this college?

When he spoke to the students for the first time on October 5, 1950, he integrated his answer:

"These values . . . springing from the genius, or the spirit of the place — truth and the love of truth, justice, tolerance, the discipline of free men and women, self-reliance, tolerance, pendency of spirit, the habit and pride of responsibility, faith in human dignity and progress, belief in God."

Perhaps, after all, it isn't too difficult to define the Woman's College.

News from Former Faculty

Although retired from Woman's College activity, the former faculty have not retired from the art of living as evidenced by messages several of them have written especially to the alumnae.

JESSIE McLEAN
(R.N. head nurse at WCUNC 1916-1946):

I keep house at 927 Carr Street, three blocks from Woman's College, so I can attend lectures, music plays, etc.

I also have two young women living with me, one from the library at Woman's College. The other is a Presbyterian worker at the college through the Church of the Covenant. I love housekeeping and working in my small yard. A number of my past students come to see me and I enjoy them so very much, and wish they could come often.

EDNA A. FORNEY
(Cashier's Office):

MY HEARTY GREETINGS TO ALL OF MY FRIENDS AMONG THE ALUMNAE!

For a year and a half I have been living at 329 McIver Street, where four of us now reside, following the cooperative purchase of this four - unit apartment house. The other three owners are Abigail Rowley, Viva Playfoot and Elva Barrow. We enjoy living together and yet separately. I enjoy being near the college since I retired. I stay busy keeping house, sewing and travelling occasionally.

CLORA (McNeill) FOUST
(Wife former President J. I. Foust)

In the mornings I do secretarial work for Greensboro Industries — a very progressive association of Greensboro industrialists who, I find, are concerned about the welfare of humanity as well as in their own prosperity. In the afternoons I get recreation from digging in my back yard, working with garden clubs, the D. A. R., keeping in contact with the faculty through our Faculty Wives Club, and all the other things that women love to do.

I do hope each of you will contribute to this new fund which can mean so much to the College. One thing I am always hoping for is a grand pipe organ for Aycock Auditorium. How wonderful it would be if some of you could influence a wealthy friend to give this organ so that we needn't have another commencement without it!

I still live at the old Foust home at 921 Spring Garden, where I am always so happy to have any alumna or friend of the College drop in for a little visit.

CORNELIA STRONG
(Department of Mathematics):

After months of crippling arthritis following my sister's long illness and her death, I am rejoicing in an improvement greater than I dared hope for. And I am less lonely since Mrs. Boyd — many of you will remember her — came to the Stronghold. (I fixed up a little apartment for her last summer.) We often talk over old times at the College.

In spite of my seventy-five years, I don't feel old and life, while less active, is increasingly interesting. And I can hardly tell you with what interest I follow the old girls, how glad I am to see them when they come back to Greensboro, and how grateful I am for any evidence that they have not forgotten me.

CAROLINE B. SCHUCH
(Department of German):

There is a pent house on 114 South Mendenhall Street in Greensboro, North Carolina. That is where I live. When I first moved there eighteen years ago I named it: *The Green Treetops*; but because of the chameleonlike character of these treetops, changing in October to purple, gold and red a bit later losing all color and foliage, I decided to call my pent house *The Treetops*.

What do I do? First of all I try to keep house. Then, there is my piano which I bought before retiring to help keep me from becoming bored.

At present I am engaged in Red Cross and church work. Periodically I find time to read to a good friend whose sight has become impaired. Yesterday, I learned that a neighbor who is blind was wishing she were able to read once more a book she enjoyed in her girlhood. It is *Pilgrim's Progress*, so I am planning to read it to her.

When I feel the need of a real outing I pack my suitcases and take a trip. In May I spent three weeks in Florida and the late summer I spent in Lincoln, Nebraska.

I have not been bored a minute since I retired and I regret not finding enough time to read more good books. The result is I wish there were forty-eight hours in the day.

EARL H. HALL
(Biologist—sent by Mrs. Hall):

First of all we are enjoying our growing-up grand children as that is what brought us to Roxboro.

To begin with we are known here as "Fessy and Ma Hall" 'cause that's what our grand children call us and others have taken it up.

Mr. Hall continues his garden, so the deep freeze is stocked with vegetables, strawberries, boysenberries and red raspberries. He has a large work shop in the basement well equipped with power tools. He enjoys this when leisure time permits.

In 1948, Mr. Hall was given a job as head of the Veterans Education Program in Person County, which proved very satisfactory for all concerned.

Then, after that program closed up, he thought he would have plenty of time to call his own, but no! He was drafted by the Person County Superintendent and the Board of Education to be Administrator of School Literature and supplies for all Person County Schools. There, too, he is "Truant Officer" for lack of a more flattering word. With his church and social activities and TV listening, this sort of rounds him out in a nut

WC Tourists in Europe

If WC has a new, cosmopolitan atmosphere this year, it might well be due to the half dozen students who spent a well-traveled summer in most of the European countries.

From the Swiss Alps to the "land down under," emissaries of good will, Woman's College style, brought back memories of a summer full of good times and new ideas.

BELGIUM

Sue Martin, whose father is with the United States Embassy in Belgium, spent the summer months in Brussels and came back with an engagement ring, no less.

Girls who are bothered with the lack of privacy outside the residence halls at curfew should talk with Sue about the Belgian girls, who shake hands with their dates and leave them at the car.

Claudia Duncan traveled with friends to France, Belgium, Luxembourg, and England. While in England she met Aly Khan and his family, David Rose, Clark Gable, and Ethel Smith.

An English salesgirl, Claudia reports, was surprised to learn from Claudia that Americans do not hate the British.

Several girls traveled with specific groups.

SWITZERLAND

Daphne Plaster went to Switzerland with the Girl Scouts to the Juliet Low Conference which is held each year at Challet near Aetelbaden. Girls from nine nations attended the conference, which is sponsored by the scouts, who save their pennies to enable them to exchange counselors each year.

Nell Ivey was a member of a group of twelve who worked with the North Carolina Methodist Caravan to Austria and Germany. The young people in these countries do not enjoy freedom of worship; they must be careful that people do not hear what goes on in their meetings, and they can discuss only what they are told to. Especially unfortunate are the youth in the Russian sections of Germany.

AUSTRALIA, TOO

Traveling in a very different part of the world was Sue Nichols, who went to Australia with the International Farm Youth Exchange, a group interested in promoting good will between America and other countries. This was the first time that this group had met in Australia.

During the stay in Australia Sue celebrated her twenty-first birthday anniversary and her Australian friends complimented her with a "bangup birthday party."

All of these travelers encourage others to go abroad, but offer one piece of advice — learn a foreign language!

Pause for a Moment

(Notice to students in the Soda Shop)

Someone who wants a college education needs your help.

Scholarships are made possible by the proceeds from the Soda Shop. You can increase those profits by keeping the Soda Shop tables clean, eliminating the need for extra employment.

A few seconds of your time may mean a year of college for someone else.

The Carolinian

Published Weekly During the Collegiate Year by the Students of Woman's College, University of North Carolina.
First published May 19, 1919.

SUBSCRIPTION RATE
For the collegiate year, \$1.50 to students; \$2.00 to the public.

REPRESENTED FOR NATIONAL ADVERTISING BY
National Advertising Service, Inc.
College Publishers Representative
420 MADISON AVE. NEW YORK, N. Y.
CHICAGO - BOSTON - LOS ANGELES - SAN FRANCISCO

Member
Associated Collegiate Press
Distributor of
Collegiate Digest

Editor-in-Chief Sally Beaver
Business Manager Katy Farthing Greene
Managing Editor Zita Spector
Associate Editors—Pat Thomas, news; Jarrad Denhard, features; Lynda Simmons, interviews; Ann Braddock, Billie Hughes, Ruth Jones, Hope Leonard, Violet Puckett, Mary Ann Raney, George Stradley, headlines; Joyce Young, photography; Louise Merz, make-up; Barbara Hutton, Carolyn Lentz, Diane Weitner, re-write; Carolyn Leagon and Gwen Clark, co-editors, sports.

Special Alumnae Editor Tempe Hughes Oehler
Alumnae acknowledge with grateful thanks the special assistance given by the following: Ruth Abbott Clarke, Betty Brown Jester, Ellen Griffin, Susan Robinson, Betty Wharton Newland, Virginia Terrell Lathrop, and A. A. Wilkinson, photographer.

Alumnae Fund Is Successful for Year 1951-52

College Collection Shows WC of Yesteryear

History is in the making at Woman's College.

Do you know that in 1892 the students were charged eight dollars a month for their board, and that this figure was considered excessive in some quarters?

Do you know that the turn of the century found the college in the midst of an epidemic of typhoid fever which resulted in the death of fourteen students and one member of the college staff?

Do you know that in January, 1904, the principal dormitory was destroyed by fire?

All these events are described in the College Collection, a group of Library materials devoted exclusively to the history of Woman's College.

The most complete account of college history is found in the College scrapbooks of newspaper clippings.

From them we learn that the General Assembly, when it passed the act to establish a normal school for white girls specified that it was to be located in the town that would contribute the most financial aid to the school.

(Continued on Page Six)



DR. CHARLES DUNCAN McIVER . . . stands watch over front campus

THE WOMAN'S COLLEGE OF THE UNIVERSITY OF NORTH CAROLINA GREENSBORO

To the Alumnae of Woman's College:

On behalf of Alma Mater, I want to extend at this time her maternal blessing, and her heartfelt gratitude for the significant gift you have made to her through the Alumnae Fund. It is a generous profession of faith.

In this instance, the faith may do something as remarkable as moving mountains. One of the happiest surprises last year was the astounding mileage we got out of some of the dollars that came our way. The dollar that has demonstrated such a high degree of potency is the sort of dollar that comes in through the Alumnae Fund—the dollar that is unrestricted as to purpose, and that can be put to work where there is greatest opportunity for productive return. By no means all dollars have this potency. It takes more dollars to do the routine jobs of maintaining plant, buying supplies, and that sort of thing. Of the common-or-garden-variety dollar, it may wistfully be said that they simply don't build them the way they used to.

But the high-potency dollar, the dollar that doesn't go to the routine jobs but to the greatest opportunity for productive return is different. Let me give you one example of how it has already operated. Two years ago, we felt that the most important project at hand was the Faculty study on General Education. Funds available for the study were roughly equivalent to the present Alumnae gift. For 1952-53, six members of the Faculty won, in difficult national competitions, valuable fellowships to carry forward their General Education studies at leading institutions in this country and in England. In each instance, the study projects submitted by these Faculty members in the fellowship competitions were developed in their work on the General Education study on our campus. The tangible returns at the moment are fellowship funds totaling more than ten times the amount of the original financial support—fellowships that are going directly to improve the teaching effectiveness of certain of our ablest young Faculty members. There are, of course, less tangible and even more important returns for the College as a whole. Last year's Alumnae gift has comparably exciting possibilities. As you may know, we have already put it to work in one section of the large and highly productive field of General Education, where our initial plowing has shown such promising results. We are using it for a project on the evaluation of teaching. Briefly, evaluation studies are directed toward the question: "How good can we get?" We shall never know, unless we first ask ourselves how good we are now, and particularly why we are good, and how we can get better. We think evaluation is important. Apparently other people think so, too, for there is already encouragement that high-potency dollars which you have given us are going to help produce an important tangible return in the not-too-distant future.

For the years ahead, we can see a variety of purposes where the dollar that comes in through the Alumnae Fund will continue to be a high-potency dollar. Scholarships for outstanding girls who will be our Alumnae of the future, aid to our work in music and the arts, alumnae institutes, and a number of other vital projects—where our emphasis is on special achievement and distinctive service—come to mind.

The tangible returns are important, but vastly more important are the returns toward which the College may look in terms of simple excellence. This is where the real potential of the unrestricted gift makes itself felt. And the Alumnae gift will go always to the greatest opportunity for excellence.

Cordially yours,

EDWARD K. GRAHAM, Chancellor.

Unusual Type of Textile Research At Woman's College Aids Buyer

"There is nothing like it in any woman's college in the country so far as I know."

This statement is made by Dr. Pauline E. Keeney in describing an unusual type of textile research in the Woman's College School of Home Economics.

Dr. Keeney, who directs the research, has announced the completion of two projects: one in testing the fume fading of some acetate rayon fabrics used in blouses; and the other in experimenting with the permanence of crease resistance in cotton dress fabrics.

These projects had undergone some study prior to completion of new laboratories in 1951.

A new project under way is that of studying problems that may face women consumers in using new synthetic fabrics just coming out on the market such as orlon, dylon, acrylan, and dacron.

The purpose of these experiments is to analyze for individual

consumer use (particularly for women buyers) the value of fabrics in ready-made garments or yard goods.

Work in textile research is carried on in conjunction with class work in a teaching capacity as well as in one of discovery of information about the fabrics.

Projects are confined to those that can be handled within the student's ability and interest. Seniors do special problems and graduate assistants gather thesis data through experimentation.

The textile research program is underwritten by funds from the Home Economics Foundation and is conducted in laundry, dry cleaning, textile testing laboratories for chemical and physical testing. Phases of the research are recorded in a photographic laboratory.

"For in one great unbroken band with loyal hearts, and true your daughters stand . . . hand in hand."

State College Union Dance Paves Way for Future Trips

A delegation of more than 150 girls left Woman's College campus on chartered buses November 8. Their destination was a dance at North Carolina State College at Raleigh.

Except for the groups attending Greater University Day, this was the largest expedition to ever participate in such a program. The dance was planned as a get-acquainted affair for Woman's College and State students by the Student Union personnel at both colleges.

The buses were met just outside Raleigh by State hosts and hostesses who welcomed the girls and directed them to the college.

A dutch treat supper was served at the YMCA cafeteria where the girls were instructed to sit two at a table to be joined there by two State students. After supper a dance was held in the Frank Thompson gymnasium with approximately an equal number of boys present.

At 11:00 p. m. the band played "Good-night, Sweetheart."

Calendar

SIXTY-FIRST COMMENCEMENT 1953
May 30, 31 - June 1
Alumnae Day
Saturday, May 30
Reunion Classes
Old Guard — (1893-1902) 1903, 1908, 1913, 1918, 1923, 1928, 1933, 1938, 1943, 1948, 1952.

Student Writing Compiled, Edited

Woman's College will compile and publish this year an anthology of undergraduate creative writing of students from more than 200 colleges and universities throughout the United States.

Mr. Jackson Burgess, who comes to Woman's College this year from the University of Chicago, will serve as 1952-53 editor-in-chief of the anthology, which will be edited by a graduate assistant in the English department at Woman's College.

The anthology, planned to include both prose and poetry already published in campus literary magazines throughout the country, will be under the supervision of a committee of English faculty members.

Assisting the committee as an editorial board will be members of the literary and editorial staffs of Coraddi, Woman's College literary magazine. The board will "screen" all material submitted from the colleges and file the acceptable material for final consideration by the committee.

Alumnae Fund Writes Successful First Page In Association Story

The Woman's College Alumnae Association wrote a page of success into the journal of her history with the first year of the Alumnae Fund Program in 1951-52 by making a gift of \$2,500 to the college for unrestricted use.

The increase in amount from alumnae contributions over the previous year averages 60 per cent.

Formerly alumnae contributions had been \$3 dues per active member. Upon abolishing the required dues the average jumped to \$4.90.

Highlight among contributors is the class of 1894 which, with five members, went 100 per cent.

The class of 1951 came second with an 87 per cent representation from a class of 505.

Total number of contributors from graduates, affiliated members and friends of the college reached 3,557.

The Alumnae Fund Committee, headed by Mrs. Louise Dannenbaum Falk '29, chairman, credits much of the success of the Fund to the volunteer work of 427 class agents who sent personal notes to their classmates. Mrs. Jane Wharton Sockwell '31 is chairman of the class agents committee.

Another source of strong support is that of the local chapters and regional workers with Ellen Griffin '40 as head of the regional chairmen.

Other members of the Alumnae Fund Committee include Mrs. (Continued on Page Six)

THE CONSOLIDATED UNIVERSITY OF NORTH CAROLINA
University of North Carolina at CHAPEL HILL - The Woman's College at GREENSBORO
North Carolina State College of Agriculture and Engineering at RALEIGH
GORDON GRAY, President
WILLIAM D. CARMICHAEL, JR., Vice-President and Controller
LOGAN WILSON, Vice-President
OFFICE OF THE CHANCELLOR
Chapel Hill

Dear Alumnae:

With the end of June this year, the Alumnae Fund of the Woman's College concluded its first twelve months of operation. This year will be historic in the long-range development of the College. I have been gratified to see coordinated efforts to bring all of our alumnae, now numbering more than 26,000, into a new role of participation in the life of the College.

While the financial success of the Fund is notable, the by-products of the Fund program—the increased interest of thousands of alumnae well-informed about the College, the effect of the program on the College enrollment, and other worthwhile consequences—are as important to the future development of the Woman's College as the financial contributions you have made.

I wish to congratulate the alumnae on the fine start the Fund made during 1951-52 and to extend my very best wishes for greater achievements during the coming year.

Sincerely,

GORDON GRAY, President.

« « « Class Agents for the 1951-52 Alumnae Fund » » »

1895 Ethel Parmelee Cardwell	1915 Margaret Linker Wyatt	1925 Winnie Barwick Debnam Mary Ellason Clyde Hunter	1931 Miriam Block Lubin Frances Paison Johnson Mathilda Geiger Wolfe Louise Gerham Winstead Sara Henry Smith Virginia Johnson Storey Elizabeth Lewis Mims Evelyn McNeill Sims Mary Powie Perry Vance Helen Petrie Hollifield Matilda Robinson Sugg Annie Lee Singletary Jane Wharton Sockwell	1937 Linda Mitchell Lamm Rachel Moser Cobb Daphne Savage Geraldine Spinks Allgood Judy Ulrich Capps Elizabeth Wenz Sharp	1942 Netta Allen Judy Barrett Georgia Bell Hagood Ether Bennett Mae Duckworth Hope Elizabeth du Four Bliss Ella Cooper Broughton Lois Frazier Mary E. Goforth Parker Amy Joslyn MacDougall Faye Konegays Ingherwood Frances Newsum Miller Doris Robbins Preyer Marvella Weaver Jones Sarah White Stedman Rose Wilson Henderson Blanche Woodard Haggard	1946 Jane Austin Cunningham Nancy Dobbins Haigwood	1950 Sara Lov Debnam Muriel Fletcher Lewis Rebecca Hardaway Dalton Sarah Holland Neal Wilma King Jean Anne Lambeth Sutton Orianan McArthur McKinnon Shirley Mahan Helen Mamber Levin Helen Moody Buckner Barbara Moomau Nancy Ann Porter Eleanor Rigney Esther Samuelson Marie Shaw Marilyn Shaw Davilla Smith Perry	1951 Nancy S. Atkins Heldman Nancy Blanton Smith Nellie Bugg Gardner Charlette V. Hunch Sarah H. Carter Womble Ann Farmer Sisk Ann E. Flack Roseman Frances D. Falcher Phillips Mary Ruth Hall Lloyd Sarah Ann Hamilton Kimball Jean K. Hoghead Few Betty Ann Howard Brockenridge Tempe A. Hughes Oehler Julia Ross Lambert Thayer Jaylee Montagu Ada Jane Moore Hazelbelle L. Parsall
---------------------------------	-------------------------------	---	--	--	---	--	---	---

Contributors to Women's College Alumnae Fund 1952

Star (*) indicates contribution received since July 10, 1952

- 1893 (20%) Cammie Curtis Wright
1894 (100%) Rachel Brown Clarke
1895 (33%) Lucy Emma Copeland
1896 (68%) Follie Bain Kenyon
1897 (41%) Nellie Bond Askew
1898 (55%) Lilla Exum
1899 (50%) Lucy Coffin Ragadale
1900 (48%) Katie Melver Bute
1901 (50%) Rosa Abbott
1902 (27%) Virginia Brown Douglas
1903 (56 1/2%) Mary H. Bridges
1904 (33%) Ha Brower Nowell
1905 (56%) Margaret Cox St. Amant
1906 (41%) Empress Eugenia Hoddie
1907 (30 1/2%) Agnes Blake Lueders
1908 (25 1/4%) Nettie Brodgen Herring
1909 (65%) Beanie Coats Whitley

- Elizabeth Robinson Fort
1911 (37%) Rose Hatterham Housekeeper
1912 (40%) Leah Hobbie
1913 (42%) Halle Anthony
1914 (38%) Coline Austin Thies
1915 (26%) Gladys Avery Tillet
1916 (44%) Annie Beaman Funderburk
1917 (36%) Ethel Audrey Coble
1918 (42%) Elsie Anderson Saunders
1919 (25%) Nellie Andrews

- 1920 (34%) Mary W. Abernethy Powles
1921 (35%) Mildred Harrington Poole
1922 (26%) Sarah Archibell Campbell
1923 (31%) Grace Albright Stacey
1924 (32%) Madge Alderman Marshall
1925 (26%) Claude Aycock
1926 (26%) Ava Lee Andrews Brown
1927 (27%) Christine Holland

- 1928 (23%) Ava Lee Andrews Brown
1929 (23%) Emma Beaman Day
1930 (26%) Aileen Aderholdt
1931 (24%) Mabel Aderholdt
1932 (21%) Helen Abernethy
1933 (24%) Mildred Adams Stowell
1934 (17%) Elizabeth Yates King
1935 (21%) Helen Abernethy

- 1936 (23%) Mildred Adams Stowell
1937 (17%) Elizabeth Yates King
1938 (20%) Jean Abbott Harris
1939 (24%) Imo Jean Hamilton Middleton
1940 (48%) Katie Melver Bute
1941 (33%) Ha Brower Nowell
1942 (31%) Grace Albright Stacey
1943 (44%) Annie Beaman Funderburk
1944 (36%) Ethel Audrey Coble
1945 (42%) Elsie Anderson Saunders
1946 (32%) Madge Alderman Marshall

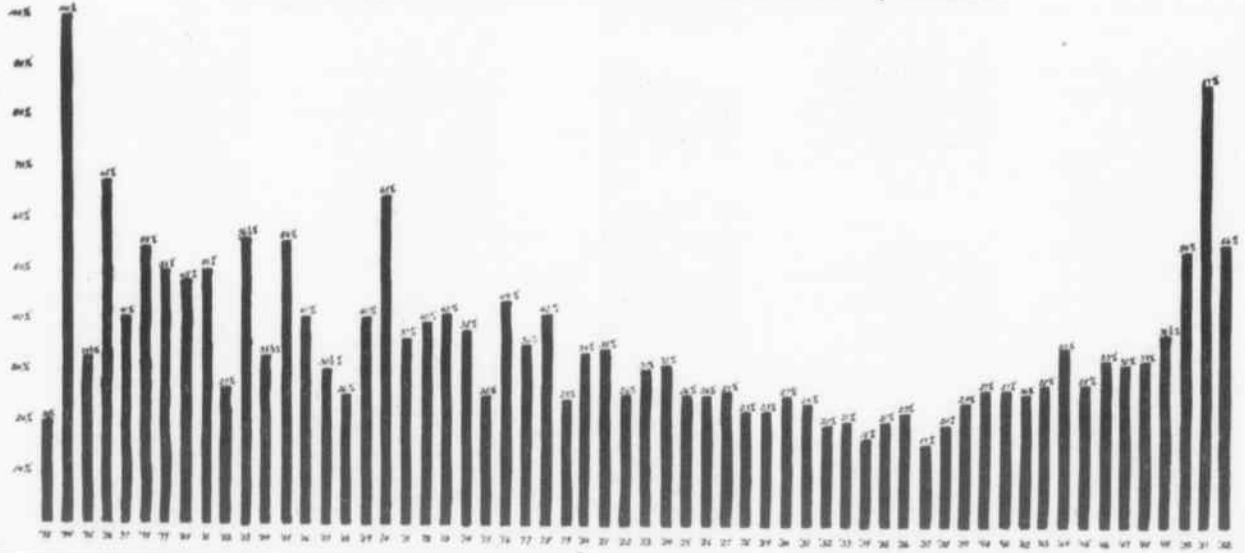
- 1947 (31%) Grace Albright Stacey
1948 (44%) Annie Beaman Funderburk
1949 (36%) Ethel Audrey Coble
1950 (42%) Elsie Anderson Saunders
1951 (32%) Madge Alderman Marshall
1952 (26%) Claude Aycock
1953 (26%) Ava Lee Andrews Brown

- 1954 (31%) Grace Albright Stacey
1955 (44%) Annie Beaman Funderburk
1956 (36%) Ethel Audrey Coble
1957 (42%) Elsie Anderson Saunders
1958 (32%) Madge Alderman Marshall
1959 (26%) Claude Aycock
1960 (26%) Ava Lee Andrews Brown

- 1961 (31%) Grace Albright Stacey
1962 (44%) Annie Beaman Funderburk
1963 (36%) Ethel Audrey Coble
1964 (42%) Elsie Anderson Saunders
1965 (32%) Madge Alderman Marshall
1966 (26%) Claude Aycock
1967 (26%) Ava Lee Andrews Brown

- 1968 (20%) Kate Urquhart
1969 (20%) Jean Abbott Harris
1970 (20%) Jean Abbott Harris
1971 (20%) Jean Abbott Harris
1972 (20%) Jean Abbott Harris
1973 (20%) Jean Abbott Harris

Percentage of Alumnae Fund Contributors by Classes



Alumnae Fund Contributions Make Us Active Partners in the future of our woman's college



BISCUITS FOR DINNER . . . prepared in Home Economics food laboratory

STUDENTS . . . pause at a picnic in Peabody Park

OLGA BIBZA, seated third from left . . . outstanding modern dancer, instructs class in dance rhythm on especially-equipped stage in Coleman Gymnasium

- Rebecca Hollowell Hamrick
- Eleanor Horner Vaughan
- Evelyn M. Howell
- Pauline Hudspeth Wood
- *Margaret L. Huff
- *Mary Louise Hughes Taylor
- Sara Joyner Lockhart
- Dorothy Kainpe Hyatt
- Eunice King Durgin
- *Jenn Kinsey Winders
- Doris Kinlaw Lee
- Alma Kirschlin Spier
- Marguerite Koonce Fleming
- Natalie Krug Lee
- Marie Lane
- Grace Evelyn Loving Gibson
- Kathleen McBrayde Smith
- Marguerite McCallum Mulhern
- Alma McCallum Templeton
- Emma K. McNeill Seyfried
- Muriel Mandell Vogel
- Dorothy Marks Powell
- Jennie S. Marks Hartgen
- Louise Moroney Chaffield
- Maxie Moore Osborne
- *Elizabeth Morgan Sides
- Ruby Morgan Sheridan
- *Margaret Moser Lander
- *Mary Sue Moser
- Marion O'Connell Murch
- Eleanor Palmer Dennett
- Ruth Palmer Bell
- Dorothy Patterson Thornton
- Anne Pike Howard
- Valerie Powell Jones
- Alia Prine Phelps
- Roberta Purdy
- Frances Redfern Broadhurst
- Mary Riddick Gregory
- Kathlyn Saltman Zucker
- Mary Simmons Overman
- Eloise Smith Johnson
- Evelyn Smith Staby
- Mamie Grace Smith Hayes
- Mary Louise Spratt
- Mary Jane Sprull James
- Alice A. Sutter
- Rebecca Talley Stevenson
- Anne U. Tillinghast
- *Margaret Toler Munn
- Anna Turner Loffin
- Charlie Walker Garrou
- Florence Warren Gorton
- Myrtle Williamson Berryman
- Janice Abernethy Ranum
- Bette Baine
- Kathleen Harber Barnes
- Frances Bell
- Hana Blackwood Hillman
- John Blumenthal Pomerantz
- Annie Braslow Rowe
- Alma Brewer Tarlton
- Marybelle Cline Dulaney
- Luella Burden Ross
- Doris Burke May
- Alpha Burrell
- *Annie Caldwell Glenn
- *Florence Calvert Glenn
- Inhogene Cashion Pritchard
- Hobbie Lee Clegg Minton
- Laura Clise
- Marybelle Cline Rhyne
- *Margaret Colt
- Frances Cooke Neal
- Muriel Craig Gill
- Frances Daniel Sweet
- *Nettie Lee Day
- Emma Draughon Lewis
- Kita Dubois
- Frances Edwards Jenkins
- Mary Louise Edwards
- Elva E. Evans
- Kathryn Evans Heath
- *Sarah Fleet Jones
- Thomasena Gandy Lankford
- Sara Gentry Hood
- Rachel Gilchrist Norton
- Lucile Griffin Leonard
- Edna Groves Heffron
- Edna Gunn
- Katherine Hamrick Andrews
- Virginia Hardesty Bradbury
- Dorothy Way Harless
- Martha Hazen Spruill
- Katharine Harris Berger
- *Harriet Hatch
- *Sigrid Heine Brown
- Margaret Herbin Stewart
- Jean Hodges Reel
- Edith Hopkins Thorn
- Betsy Howard
- Carolyn Howell Brink
- Susan J. Hunter duFour
- Eleanor Jackson Northcott
- Dorothy Johnson
- Rowena Knott Berry
- Virginia Lee Rebalko
- Betty Lippman Plink
- Frances Little Park
- Matrena Lockhart Fion
- Isabel McIntosh Fowler
- Ruth McKeithan Thomason
- Ellen McGill Meyer
- *Anna Melvill Holliday
- Martha Mendenhall
- Mary Miller
- Mildred Millisaps Pike
- Daisy Moore Routh
- Lillian Montgomery Carter
- Helen Finch Morgan Harris
- Janet C. Morrison
- Mary Frances Ross
- Helen Mullican Hicks
- Janel Murphy MacCubbin
- Margerie Norton Bishop
- Jan O'Connor duFour
- Beulah Dore Ormand Nelson
- Jean Owen
- Helen Parker Kelman
- Irene Parsons
- Janice Paschall Thaxton
- Elizabeth Patten Bradford
- Alice Peters MacMackin
- Shirley Piller Barr
- Nancy Pilley Daniels
- Mildred Pleasant Bullock
- Alice Porter Brackett
- Bessie Powell Carter
- Betty Prevette Godwin
- Sarah Ramsaur Heyward
- Bette Ross Williams
- Blanche Rubin Gaines
- Charlotte Mae Samet
- Sally Sewell Hundley
- Florence Sharp Newsom
- Heles S. Sherwin
- *Deiliah Siler
- Eleanor Sloop Jenkins
- Betsy Smith Cannon
- Margaret Smith Cashin
- Nancy Smith Rose
- Nancy Smith
- Nancy Smith
- Fannie Sumner
- Helen Sweet Vandercook
- *Dorothy Swindell Watkins
- Geraldine Teague Wood
- Louisa Nelson Tucker
- Margaret Vreeland Gardner
- Mildred Vreeland Gamber
- Josephine Walker Vinson
- Dorothy Jagwell Ward
- Charlotte Warren Creech
- Barbara Washington Jerald
- Virginia Wells Welch
- Lottie Faye West Warren
- Caroline Wolfe Ashcraft
- Rebecca Woolsey
- Rachel Yarborough Thompson
- 1942 (26%)
- Frances Alexander Berkeley
- Christine Allen Wright
- Netta Allen
- Frances Ardell Kettler
- Nell Hardesty
- Elizabeth Barineau Shipman
- Judy Barrett
- *Margaret Barringer Brooks
- Georgie Bell Hagood
- Esther Bennett
- Ruth Blackman Ferguson
- Dorothy Black Fox
- Helena Blue Neill
- Ruth Butler Bailey
- Alma Lou Chandler
- Ellen Cochran Withers
- Mary Cochrane Ledbetter
- Marvegin Cockfield Wilkins
- Margorie Conklin Hall
- Jane Crofts Cromer
- Maxine E. Dark
- Lucile Darvin Maurer
- Ruby Lee Dixon Sides
- *Priscilla Downey Scelzer
- Mae Duckworth Hope
- Elizabeth du Four Bliss
- Marjorie Edwards Plyler
- Mary Eppes Turner
- Elizabeth Foster Shapira
- Clara Forster Hahn
- Louis Franier
- Elizabeth Furgurson Bain
- Mary Goforth Parker
- Bearrice Goldman Fisher
- Jean Grantham Fisher
- Margaret Griffin
- Vera Groves Webster
- Therese Guin Farlow
- Lou Hardy Fyler
- Vivian Harrell Hayes
- *Annis Hines Bookes
- Frances Henry Crichtfield
- Frances Hieb Hofman
- Frances Hill
- Lula Hilton Hoskins
- Lida Holita Hoy
- Ruth Holt
- *Frances Horton Burroughs
- Eleanora House Williams
- Dorothy Howard Dickinson
- *Alice Hyman Blumenthal
- Marjorie Johnson Johnson
- Memory Johnson McHride
- Amy Joslyn MacDougall
- *Faye Korngard Isberwood
- Marybelle Lee Reesman
- Ruth Leonard
- Mable Lloyd Gordon
- Virginia Lyster Annuaziata
- Frances Mae Lyon Meyer
- Mary Lou Mackie Bryant
- Jean Malin Gillen
- Dorothy Manstield McDaniel
- Mae Melvin
- Margaret Moore Vaughn
- Sue Murchison Hayworth
- Marie Myers Franck
- Frances Newsom Miller
- Thomasena Gandy Lankford
- Ernestine Gettlinger Withers
- Betty O'Neil Melby
- Jean Park
- Anne Parker Stevens
- Mary Ellen Payne Craven
- Eleanor Pearce Holding
- Almeida Pleasant George
- Sadye L. Poole
- Mary Lillie Ray Barden
- Hilda Gea Renegar Moffitt
- Jean Riden
- Meredith Riggsboth
- Margie Robinson Freyer
- Theo Roberts Creadick
- Rachael Robinson Fielbel
- Edythe Rutherford Lambert
- Elizabeth Sargent Cochran
- Willena Schoone
- Mary Ann Scott Clark
- *Mary K. Scott Loderwick
- Sarah Sieber Kutzleb
- Edna Gwyneth Miller
- Ernestine Smith Napoli
- Irene Smith Edwards
- Jean Smith Holman
- Elizabeth Southard
- Ellen Southerland Willis
- Josephine Stewart
- Hazel Strongfish Fisher
- Lois Stringfield Simons
- *Marjorie Sullivan Wagoner
- Mary Wood Swain Lupo
- Eloise Taylor Jackson
- Eloise Teague Cobb
- Frances Tompkins Hodges
- Mary White Thompson Brown
- Neddy Anne Tooty
- Nell Tucker Brock
- Catherine Turner
- Anne Turrentine Hazen
- Virginia Vache Spurlin
- Betty Walker Shuford
- Margaret Wallace Ayres
- Jackson Wallace Plumb
- Marvella Weaver Jones
- *Evelyn Welch Dean
- Marie Wells France
- Elizabeth Wenzel Bass
- Nancy Willey Daniels
- Frances Whalin Dulin
- Frances White Stegman
- *Mary E. Woodlief Beckenridge
- Blanche Woodard Haggard
- 1943 (28%)
- Helen Ames Glaze
- *Sarah Baily
- Nancy Barden Rabura
- Rachel Barrett
- Carolyn Bason
- Anna Bell Dickenson
- Mary Frances Bell Haiselman
- Menefee Bennett Little
- Eugenia Bion
- Zula Berrier Davis
- Jean Booth
- Katherine Bowling Palmer
- Frances Brennan Bullard
- *Carolyn Brooks Thomas
- Hazel Bryant Johnston
- Mary E. Doggett Beaman
- Ruby Horton Thomas
- Armatine Dunlap Douglass
- Annabel Embrey Hansen
- Anna Fake Townsend
- Christine Faulk Hayes
- Frances Faulkner Dudley
- Ruth Ferguson Burser
- Cherry Polger Watson
- Lois Fowler
- Catherine Fritz
- Sara Fulton Connelly
- Mary Graham Gantt
- Katherine Gray King
- Ruth Greene Fulton
- Corra Guthrie Tunstall
- Henrietta Hall
- Lois Fowler
- Catherine Fritz
- Sara Fulton Connelly
- Mary Graham Gantt
- Katherine Gray King
- Ruth Greene Fulton
- Corra Guthrie Tunstall
- Henrietta Hall
- Sue Hall Schapiro
- *Betsy Halligan Moebs
- Ida Harper Ainsworth
- Ruth Jo Hauser Newton
- Grace Hayes Page
- Eva Higdon Wood
- Anne Holmes Jones
- Janice Honke Moore
- Frances Glaze Koenigle
- Betty L. Houser Surratt
- Marjorie Jellison Spring
- Betty Johnson Dowling
- Betty Greene Johnson Cheek
- Chase Johnson Duffy
- Katherine Johnson Rogers
- Margaret Johnson Bryan
- Delon Kearney Turner
- Francis Keel King
- Betsy King Lucke
- Mary King Davis
- Emmalee Kirby Garten
- Nancy Kirby West
- Mary M. Kirkman Holdsambeck
- Mary E. Kirschner Monroe
- *Carolyn Knott Ricks
- Lucille Kugler Goiday
- Nancy Kuebler
- Carolyn Dean Lehman
- Pauline Lewis Wallace
- Katherine Lee McCormick
- Paige Lohr
- Tom Lupton Hires
- Linda Lyon Woodall
- Margaret McIntosh Herring
- Harriet McComb Hurst
- Claire McRoberts Pierlet
- Doris McRoberts Bartlett
- Hal Mark Schaeffer
- May M. March
- Virginia Mayberry Elam
- Katherine Midgett Amber
- Nell Moody Newlin
- Mary Evelyn Morris Maruca
- Caroline Morrison
- Margaret Moss Hodnett
- Virginia Murphy Eddleman
- Billy Nickerson Ward
- Billie Nifong Albright
- Rebecca Oberler Bennett
- Carol Overcash Dudley
- *Nancy Parcell Aycock
- Mary Patten
- Patricia Patton Lawhon
- Janice Perry Hemmens
- Janice Pitarz Smoak
- Julia Pollock Plunk
- Mary Davis Pugh Parker
- Laura Powers Hooper
- Alice Quensbury Stevens
- Katherine A. Reeves
- Allison Rice Willard
- Jean Rickert Drabley
- Janet L. Roberts
- Ruth Rowland Throast
- Lois Ruching Wilson
- Doris Sabiston Keller
- Marie Sayles Houtt
- *Natalie Schlosberg Bodner
- Ruth Schohn Pilling
- Frances Elser Clark
- Mary E. Sherrill Maertens
- Dorothy Sloan Gibbs
- Betty Smith Benbow
- Katherine Smith Davis
- Edna Smith Mackie
- Louise Smith Margie
- Arline Steagall Wall
- Clare Steinacher
- Julia Stephenson Petrea
- Clara Steyer Moore
- Dorothy Stewart Rogers
- *Carolyn Stout Carlson
- Myra Stout
- Dora Stroupe Doyette
- Helen U. Sullivan
- Ann Taylor Fernelly
- Hazel Taylor Vogt
- Marion Thomas Wright
- *Mildred Thorp Draper
- Ruth Turner Semashok
- Billie Turburch Miller
- Mary Alice Vann Fox
- Mary Walker Lankford
- Katherine Cole Morrison
- Ruth Cooke Thomassen
- Doris Punderbark Morgan
- Eva C. Corbett Thrasher
- *Jean Cox Chase
- Rose Crump Morrow
- Elizabeth Cummings Fortune
- Julia Dall Harris
- Elizabeth Davenport Browder
- Betty Dixon Paschal
- Nancy Dobbins Halgwood
- Jean Dunlap Dickinson
- Janet East Albright
- Gertrude Edgerton
- Eunice Fisher Kearns
- Rachel Fleming Edwards
- Edna Firan Lutz
- Virginia Ford Zenke
- Laura Bell Foster Reed
- Helen Frostick Warren
- Josephine Galt
- Lorena Gaddy Goodwin
- Betty Gaines Kittrell
- Maxine L. Garner
- Elizabeth Garrett Wilson
- Hazel Gilbert McDowell
- Lorraine Glenn Simms
- *Mary Emma Graham Little
- Evelyn Griffin Garner
- Nedda Grimm
- Margaret Guin Hurst
- Virginia Harris Rothman
- Louise Highsmith Wilkerson
- Mary Jane Hinely Clara
- Mary Moore Hix Dalton
- Constance Jason Shon
- Rachel Johnson Phipps
- Lillian Frances Jordan
- Mary Agnes Cochrane Ward
- Betty Ivey Sawyer
- Marilyn Jackson
- Jean Jerigan Rudolph
- Carolyn Jones Maness
- Marden Jones Headle
- Iris Kiger
- Mary Jo Phippin Woods
- Patsy Fordham Myrick
- Virginia Fuik Petretti
- Kathryn P. Palmer
- Helen Gibson
- *Anna Gillipie Rogers
- Evelyn Glass Durham
- Elizabeth Grady Taylor
- Edith Margaret Grant Ramsey
- Hilbert Grant
- Allene Grier
- Camilla Grimm Herlevich
- Jane Guy
- *Evelyn Guilleage Corbett
- Thelma Hays Peeler
- Norma Haft Gaines
- Mary Harrington Johnson
- Julia Hill Gunn
- Pauline Hill Welch
- Laura Leon Connelly
- Jean Holmes McAdams
- Margaret Holt Coker
- Betty Hudson Driscoll
- Kitty Maxwell Sanders
- Doris Jones Yeates
- Nancy D. Katsenberg
- Elaine Kirschner Laucks
- *Cavella Lentz Lund
- Sara Lockhart Carr
- Nella Leeson Connelly
- *Henriette Mangot Neal
- Mary Maaburra Clark
- Alice H. Mauney Snow
- Betsy King Lucke
- Eleanor Moen Anderson
- Wilma Moody Overbeck
- Jean Ann More Perry
- Wilma Morrison King
- *Doris Murph McNeely
- Ella Mae Norman Livingston
- Peggy O'Connell
- Mary Owen Magnus
- Dianne Page Hench
- Thelma Page
- Gwendolyn Pierce Fish
- Margaret Potts Purchase
- Suzanna Ray Gwyn
- Augusta Reese Hockaday
- Alise Reid Irwin
- Laurene Renfrow Haru
- Rose Rosenast
- Alice Ross Austin
- Sarah Secrest Hooper
- Ruth Royal Barnes
- Mary Satterfield Taylor
- Carolyn Scarborough Shian
- Lee Sherrill Matthews
- Janet Sherrill Schumling
- Betty Simmons Barber
- Mary Jean Smith
- Sara E. Smithson Capps
- Lucille Tegg
- Doris A. Stryker
- Barbara Suttive Glowacki
- Mary Frances Sutton Sinclair
- Margaret Swindell
- *Nancy Taylor Farmer
- Celeste Ulrich
- Phyllis Vreeland Roberts
- Annie Mae Wagoner
- Elizabeth Warner Myers
- Eleanor White Willett
- Nancy White
- Mary R. Whitener McLaughlin
- Evelyn Whittenton Ingham
- Gloria W. Williams
- Marjorie Wyatt Howe
- Catherine Yoe Widesquiat
- Myrtle York McAulay
- Janet York Little
- *Winnie Young
- Eleanor Younts McCall
- 1947 (32%)
- Jean Adams
- Julia Alexander
- Elizabeth Allyn Sands
- Nancy Ansel Lee
- Maxine D. Applewhite
- *Carol Armstrong Foreman
- Evelyn Auman O'Neal
- Sarah V. Austin
- Elizabeth Bass Beard
- Agnes Beal Moore
- Betty Sue Beaman Wicker
- Marjorie Bell Wright
- Ruth Brawley Callison
- Virginia Burnett Petrea
- Sarah Campbell Elliott
- Mildred Carlson Garner
- Elizabeth Carter
- Kathryn Cobb Freyer
- Peggy Collins Tindler
- Helene Covington
- *Marion Covington Gwinn
- Cynthia Cox Moore
- Nancy Cromer
- Kathleen Crow
- Helene Dalton
- Heleen Daultrey Duke
- *Lula Davidson Potts
- Jay Davis
- Edna Deane Denny
- Eleanor Dickey Green
- Nancy Dorier Prevatt
- *Anita Egeerton Parker
- Patricia Elliott Dow
- Dorothy Ennis
- Norma Lee Ekeky Bisha
- Alice Farmer Davis
- Martha Faulconer Purley
- Terese Gailigan Woodside
- Elizabeth Goodman Klein
- Ruth Gray Williams
- Bertie Graybell Brown
- Phyllis Green Houser
- Jane Harrell Ganser
- Geraldine Haynes Wagner
- Joanita Henry Midyette
- Marie Hurlocker Jones
- Nancy Hill Neese
- Helen Hinchaw Davis
- Mary Little Hipp
- Edie Holman King
- Carolyn Goforth Erwin
- Jewel Howard Lupton
- Mary Lou Howard Harrison
- Dorothy Hubbard Stron
- Janice Huggins
- Jewell Hyatt Penny
- *Ruth C. Hyatt
- Karen Irvine
- Lillian James Brannon
- Elizabeth Jarman Inman
- Constance Jason Shon
- Rachel Johnson Phipps
- Lillian Frances Jordan
- Mary Agnes Cochrane Ward
- Betty Ivey Sawyer
- Marilyn Jackson
- Jean Jerigan Rudolph
- Carolyn Jones Maness
- Marden Jones Headle
- Iris Kiger
- Oliver Kimbrough Bobbitt
- Frances Kittrell Fritchman
- Alice Klaber Wolff
- Betty Sue Knight Baldwin
- Martha Sink Koozst Hearn
- *Daphne Lamb Stoll
- Emogene Landrum
- Elizabeth Laughridge
- Dorothy Lee Stapleton
- Jane Laville Joyner
- Henrietta Luther Menius
- Evelyn McLeod Vance
- Jean McMichael
- *Correne McQuage Whalley
- Agnes Mansors Tally
- Margaret Meares Davenport
- Annie Mitchell Cannady
- Betty Moore
- Priscilla Moore Brinkley
- Gladys Morgan Vitelli
- Katherine Morgan Glauberman
- Sarah Moss Clark
- Nancy Nading
- Mabel Newlin Michael
- Sally Orr Harrell
- Betty Jane Osborne Baldwin
- Bettie Jane Owen
- Elaine Owen Hayes
- Elaine Owen Phlips
- Josephine Pope
- Margaret Prongay
- Laura Sprout Propper Cohen
- Musa Queenberry Hogan
- Betty Anne Ragland Stanback
- *Carol Raper
- Elaine Raskind Lefkowitz
- Lizbeth Richardson Hicks
- Celia Roehrbach Webb
- Catherine Rowe Carey
- Helen Sanford
- Adelene Scott Akard
- Sarah Secret Handwork
- Jane Severance Fry
- Dorothy Shields Gregory
- Elizabeth Shipman Bennett
- Gladys Storey Martz
- *Margaret Squier Johnson
- Nell Swain Teague
- Emma Lou Taylor Traylor
- Josephine Temple Seat
- Jane Terry
- Doris Jean Thomas Getty
- Hilman Thomas Watkins
- Alma Tilton
- Eulalia Tucker Solomon
- Doris Turner Alexander
- Louise Vann
- Marilyn Vincent
- Margaret Vime Patton
- Annette Wadlin Patterson
- Carol Walker Courts
- Mary Anne Walker Person
- *Betty Jo Walters Clark
- Elizabeth Walters Lingle
- Gene Washburn Sims
- Kathryn Wainick Gesell
- Ruth Lane Webb Smith
- Marion F. Weller
- Mary A. White Murphy
- Frances W. Wilkerson Thurston
- Hope Willard
- Mary Williams Dula
- Frances Wolfe
- Janice Wolfe Eaton
- Harriet A. Wright Vernon
- 1948 (33%)
- Martha B. Allen
- Peggy Almond Fullington
- Gertrude Archer Soland
- Rachel Armstrong
- Frances Abraract McBane
- Emily Ballinger
- Nina Barnes Mustian
- Ann Barnett Brown
- Jean Barnett Auten
- Florence Bearden
- Collins Bennett Greter
- Elizabeth Bienson Holtzclaw
- Paula Bird
- Marie Blue Shelton
- Laurena Bloor Japenger
- Patricia Boren May
- Minor Borng
- *Frances Bowden
- Joy Brandenburg Stephens
- Janet Breeding
- Elizabeth Carolyn Bristol
- Betty Bryant Stanel
- Lita Gray Bulla
- Betty Bullock Strandberg
- Susie Gray Bumpass
- Frances Butler
- Bettie L. Byers
- Dorothy Casey
- Gladys Chambers Martin
- Lila Chas. Kowarik
- *Opal Chamber Williams
- Mary Evelyn Childers Eastley
- Margaret Clark Arnold
- Barbara Clegg
- Linda Cleor Albright
- Carolyn Collier Boykin
- Elizabeth Lee Cunningham
- Jane Davis Lambert
- Susan Dawson Sterken
- Jane Dibben
- Diana Dickens
- Eleanor Dillard
- Margaret Dumas Bennett
- *Barbara Duval Myers
- Barbara Edinger Taylor
- Martha Egerton Olliphant
- Louise Elchorn Simons
- Viola Entermille Parrish
- *Blanche Euse Rountree
- *Nancy Evans Kuykendall
- Dorothy Cheney Sloan
- Elizabeth Clapp Griffin
- Joyce Clayton Plank
- Amelia Cloninger Stout
- Frances Frances Ashley
- Marilyn Cohn Fine
- Lucia Collarte
- Margaret Collier Trndall
- Clara Jean Cooke Griffin
- Barbara Corwell
- *Mary Wood Covington
- Miriam Crohn Slavin
- Anne Crumpler
- Carolyn Calpepper Boykin
- Elizabeth Lee Cunningham
- Jane Davis Lambert
- Susan Dawson Sterken
- Jane Dibben
- Diana Dickens
- Eleanor Dillard
- Margaret Dumas Bennett
- *Barbara Duval Myers
- Barbara Edinger Taylor
- Martha Egerton Olliphant
- Louise Elchorn Simons
- Viola Entermille Parrish
- *Blanche Euse Rountree
- *Nancy Evans Kuykendall
- Dorothy Cheney Sloan
- Elizabeth Clapp Griffin
- Joyce Clayton Plank
- Amelia Cloninger Stout
- Frances Frances Ashley
- Marilyn Cohn Fine
- Lucia Collarte
- Margaret Collier Trndall
- Clara Jean Cooke Griffin
- Barbara Corwell
- *Mary Wood Covington
- Miriam Crohn Slavin
- Anne Crumpler
- Carolyn Calpepper Boykin
- Elizabeth Lee Cunningham
- Jane Davis Lambert
- Susan Dawson Sterken
- Jane Dibben
- Diana Dickens
- Eleanor Dillard
- Margaret Dumas Bennett
- *Barbara Duval Myers
- Barbara Edinger Taylor
- Martha Egerton Olliphant
- Louise Elchorn Simons
- Viola Entermille Parrish
- *Blanche Euse Rountree
- *Nancy Evans Kuykendall
- Dorothy Cheney Sloan
- Elizabeth Clapp Griffin
- Joyce Clayton Plank
- Amelia Cloninger Stout
- Frances Frances Ashley
- Marilyn Cohn Fine
- Lucia Collarte
- Margaret Collier Trndall
- Clara Jean Cooke Griffin
- Barbara Corwell
- *Mary Wood Covington
- Miriam Crohn Slavin
- Anne Crumpler
- Carolyn Calpepper Boykin
- Elizabeth Lee Cunningham
- Jane Davis Lambert
- Susan Dawson Sterken
- Jane Dibben
- Diana Dickens
- Eleanor Dillard
- Margaret Dumas Bennett
- *Barbara Duval Myers
- Barbara Edinger Taylor
- Martha Egerton Olliphant
- Louise Elchorn Simons
- Viola Entermille Parrish
- *Blanche Euse Rountree
- *Nancy Evans Kuykendall
- Dorothy Cheney Sloan
- Elizabeth Clapp Griffin
- Joyce Clayton Plank
- Amelia Cloninger Stout
- Frances Frances Ashley
- Marilyn Cohn Fine
- Lucia Collarte
- Margaret Collier Trndall
- Clara Jean Cooke Griffin
- Barbara Corwell
- *Mary Wood Covington
- Miriam Crohn Slavin
- Anne Crumpler
- Carolyn Calpepper Boykin
- Elizabeth Lee Cunningham
- Jane Davis Lambert
- Susan Dawson Sterken
- Jane Dibben
- Diana Dickens
- Eleanor Dillard
- Margaret Dumas Bennett
- *Barbara Duval Myers
- Barbara Edinger Taylor
- Martha Egerton Olliphant
- Louise Elchorn Simons
- Viola Entermille Parrish
- *Blanche Euse Rountree
- *Nancy Evans Kuykendall
- Dorothy Cheney Sloan
- Elizabeth Clapp Griffin
- Joyce Clayton Plank
- Amelia Cloninger Stout
- Frances Frances Ashley
- Marilyn Cohn Fine
- Lucia Collarte
- Margaret Collier Trndall
- Clara Jean Cooke Griffin
- Barbara Corwell
- *Mary Wood Covington
- Miriam Crohn Slavin
- Anne Crumpler
- Carolyn Calpepper Boykin
- Elizabeth Lee Cunningham
- Jane Davis Lambert
- Susan Dawson Sterken
- Jane Dibben
- Diana Dickens
- Eleanor Dillard
- Margaret Dumas Bennett
- *Barbara Duval Myers
- Barbara Edinger Taylor
- Martha Egerton Olliphant
- Louise Elchorn Simons
- Viola Entermille Parrish
- *Blanche Euse Rountree
- *Nancy Evans Kuykendall
- Dorothy Cheney Sloan
- Elizabeth Clapp Griffin
- Joyce Clayton Plank
- Amelia Cloninger Stout
- Frances Frances Ashley
- Marilyn Cohn Fine
- Lucia Collarte
- Margaret Collier Trndall
- Clara Jean Cooke Griffin
- Barbara Corwell
- *Mary Wood Covington
- Miriam Crohn Slavin
- Anne Crumpler
- Carolyn Calpepper Boykin
- Elizabeth Lee Cunningham
- Jane Davis Lambert
- Susan Dawson Sterken
- Jane Dibben
- Diana Dickens
- Eleanor Dillard
- Margaret Dumas Bennett
- *Barbara Duval Myers
- Barbara Edinger Taylor
- Martha Egerton Olliphant
- Louise Elchorn Simons
- Viola Entermille Parrish
- *Blanche Euse Rountree
- *Nancy Evans Kuykendall
- Dorothy Cheney Sloan
- Elizabeth Clapp Griffin
- Joyce Clayton Plank
- Amelia Cloninger Stout
- Frances Frances Ashley
- Marilyn Cohn Fine
- Lucia Collarte
- Margaret Collier Trndall
- Clara Jean Cooke Griffin
- Barbara Corwell
- *Mary Wood Covington
- Miriam Crohn Slavin
- Anne Crumpler
- Carolyn Calpepper Boykin
- Elizabeth Lee Cunningham
- Jane Davis Lambert
- Susan Dawson Sterken
- Jane Dibben
- Diana Dickens
- Eleanor Dillard
- Margaret Dumas Bennett
- *Barbara Duval Myers
- Barbara Edinger Taylor
- Martha Egerton Olliphant
- Louise Elchorn Simons
- Viola Entermille Parrish
- *Blanche Euse Rountree
- *Nancy Evans Kuykendall
- Dorothy Cheney Sloan
- Elizabeth Clapp Griffin
- Joyce Clayton Plank
- Amelia Cloninger Stout
- Frances Frances Ashley
- Marilyn Cohn Fine
- Lucia Collarte
- Margaret Collier Trndall
- Clara Jean Cooke Griffin
- Barbara Corwell
- *Mary Wood Covington
- Miriam Crohn Slavin
- Anne Crumpler
- Carolyn Calpepper Boykin
- Elizabeth Lee Cunningham
- Jane Davis Lambert
- Susan Dawson Sterken
- Jane Dibben
- Diana Dickens
- Eleanor Dillard
- Margaret Dumas Bennett
- *Barbara Duval Myers
- Barbara Edinger Taylor
- Martha Egerton Olliphant
- Louise Elchorn Simons
- Viola Entermille Parrish
- *Blanche Euse Rountree
- *Nancy Evans Kuykendall
- Dorothy Cheney Sloan
- Elizabeth Clapp Griffin
- Joyce Clayton Plank
- Amelia Cloninger Stout
- Frances Frances Ashley
- Marilyn Cohn Fine
- Lucia Collarte
- Margaret Collier Trndall
- Clara Jean Cooke Griffin
- Barbara Corwell
- *Mary Wood Covington
- Miriam Crohn Slavin
- Anne Crumpler
- Carolyn Calpepper Boykin
- Elizabeth Lee Cunningham
- Jane Davis Lambert
- Susan Dawson Sterken
- Jane Dibben
- Diana Dickens
- Eleanor Dillard
- Margaret Dumas Bennett
- *Barbara Duval Myers
- Barbara Edinger Taylor
- Martha Egerton Olliphant
- Louise Elchorn Simons
- Viola Entermille Parrish
- *Blanche Euse Rountree
- *Nancy Evans Kuykendall
- Dorothy Cheney Sloan
- Elizabeth Clapp Griffin
- Joyce Clayton Plank
- Amelia Cloninger Stout
- Frances Frances Ashley
- Marilyn Cohn Fine
- Lucia Collarte
- Margaret Collier Trndall
- Clara Jean Cooke Griffin
- Barbara Corwell
- *Mary Wood Covington
- Miriam Crohn Slavin
- Anne Crumpler
- Carolyn Calpepper Boykin
- Elizabeth Lee Cunningham
- Jane Davis Lambert
- Susan Dawson Sterken
- Jane Dibben
- Diana Dickens
- Eleanor Dillard
- Margaret Dumas Bennett
- *Barbara Duval Myers
- Barbara Edinger Taylor
- Martha Egerton Olliphant
- Louise Elchorn Simons
- Viola Entermille Parrish
- *Blanche Euse Rountree
- *Nancy Evans Kuykendall
- Dorothy Cheney Sloan
- Elizabeth Clapp Griffin
- Joyce Clayton Plank
- Amelia Cloninger Stout
- Frances Frances Ashley
- Marilyn Cohn Fine
- Lucia Collarte
- Margaret Collier Trndall
- Clara Jean Cooke Griffin
- Barbara Corwell
- *Mary Wood Covington
- Miriam Crohn Slavin
- Anne Crumpler
- Carolyn Calpepper Boykin
- Elizabeth Lee Cunningham
- Jane Davis Lambert
- Susan Dawson Sterken
- Jane Dibben
- Diana Dickens
- Eleanor Dillard
- Margaret Dumas Bennett
- *Barbara Duval Myers
- Barbara Edinger Taylor
- Martha Egerton Olliphant
- Louise Elchorn Simons
- Viola Entermille Parrish
- *Blanche Euse Rountree
- *Nancy Evans Kuykendall
- Dorothy Cheney Sloan
- Elizabeth Clapp Griffin
- Joyce Clayton Plank
- Amelia Cloninger Stout
- Frances Frances Ashley
- Marilyn Cohn Fine
- Lucia Collarte
- Margaret Collier Trndall
- Clara Jean Cooke Griffin
- Barbara Corwell
- *Mary Wood Covington
- Miriam Crohn Slavin
- Anne Crumpler
- Carolyn Calpepper Boykin
- Elizabeth Lee Cunningham
- Jane Davis Lambert
- Susan Dawson Sterken
- Jane Dibben
- Diana Dickens
- Eleanor Dillard
- Margaret Dumas Bennett
- *Barbara Duval Myers
- Barbara Edinger Taylor
- Martha Egerton Olliphant
- Louise Elchorn Simons
- Viola Entermille Parrish
- *Blanche Euse Rountree
- *Nancy Evans Kuykendall
- Dorothy Cheney Sloan
- Elizabeth Clapp Griffin
- Joyce Clayton Plank
- Amelia Cloninger Stout
- Frances Frances Ashley
- Marilyn Cohn Fine
- Lucia Collarte
- Margaret Collier Trndall
- Clara Jean Cooke Griffin
- Barbara Corwell
- *Mary Wood Covington
- Miriam Crohn Slavin
- Anne Crumpler
- Carolyn Calpepper Boykin
- Elizabeth Lee Cunningham
- Jane Davis Lambert
- Susan Dawson Sterken
- Jane Dibben
- Diana Dickens
- Eleanor Dillard
- Margaret Dumas Bennett
- *Barbara Duval Myers
- Barbara Edinger Taylor
- Martha Egerton Olliphant
- Louise Elchorn Simons
- Viola Entermille Parrish
- *Blanche Euse Rountree
- *Nancy Evans Kuykendall

Dear Alumnae,

The first year of the Alumnae Fund has been successful. As a group, our Alumnae made its initial gift to the College. We take pride in this gift because it is an acknowledgment of the loyalty of three thousand, five hundred, fifty-seven Alumnae. This year, more than ever before, former students have shown their interest in the growth of Woman's College.

As chairman of the Fund, I take this opportunity to thank each class agent and regional representative who worked for the Fund and to express my appreciation to every individual whose contribution helped make a greater gift possible.

A happy and peaceful New Year to you all.

Sincerely yours,

Louise Dannenbaum Falk
Chairman, Alumnae Fund Committee

Woman's Collegians Follow National Trend; 65% Married

Do women's colleges turn out more spinsters than co-educational institutions?

They do not! Quite the contrary is true, says the president of a woman's college, and he cites figures to prove it.

Writing in the October issue of Harper's Magazine, President Lynn White, Jr., of Mills College, Oakland, California, says a survey conducted by the Population Reference Bureau among 60,000 women shows that 76 per cent of the graduates of women's colleges married against 73 per cent of the coeds.

The chief reason for the matrimonial advantage which the woman's colleges give their students, Mr. White believes, is that the students are given a higher opinion of themselves as women and as human beings.

"Despite its claims to sex equality, coeducation as it now operates in America is socially and psychologically designed to produce women who are merely docile," Mr. White writes. "The woman's colleges, on the other hand, are set up in such a way as to develop in their students those qualities of self-confidence, directness, and initiative which too many peo-

ple think of as masculine traits, but which are in fact human.

The author points out that co-educational schools never have a woman for president and rarely have as high as five per cent women among its full professors. In extracurricular activities in a co-educational school, a man is always chairman and a woman vice chairman, maybe.

But in women's colleges, the large proportion of women in the faculty and the full participation of the women students in extracurricular activities give the students a higher opinion of women in general and thus greater confidence in themselves.

For example, at the Woman's College of the University of North Carolina, according to records on hand, 16,882 of 26,000 alumnae are married, averaging an approximate 65 per cent (an exception to the rule!)

"Our motto, 'Service,' will remain, and service we will do."

Each student pays approximately \$3 cents a week for laundry and \$6.60 a month for room rent.

Regional Chairmen Take Vital Role

Groundwork for the regional agents role in the Alumnae Fund program was laid in late summer and has steadily gained momentum.

Ellen Griffin '40, chairman, reports: "Regional chairmen command a special place in the Alumnae Fund program.

"At present they have been chosen in conjunction with local alumnae chapters. Later in the fund program their number will be expanded to include representatives wherever there are concentrated groups of alumnae.

"The duties of the regional chairmen are in line with the philosophy underlying the Alumnae Fund program — pressure in solicitation is avoided, and that you give is more important than what you give.

"The regional chairmen select their own committees, bring word of the Alumnae Fund to chapter meetings, and then become the follow-up workers after the class agents have completed their duties. This follow-up work is one of personal contact. It is the last effort made each year to remind alumnae that their gifts will determine how much they as a loyal group can give to the college."

Alumnae Fund Writes First Page in Association Story

(Continued from Page Three)

Emily Harris Preyer '39; Miss Josephine Hege '27; and Mrs. Laura Weill Cone '10.

Class agents' letters for the 1952-53 request will be mailed out around February 1. Regional committees will do follow-up work later in the spring.

Mr. Curtis Fields, former alumni fund director at Yale University, is consultant for the Woman's College program.

Elliott Hall Serves As Social Center

The opening of Elliott Hall, new, modern student union building, tentatively set for second semester, will produce new horizons for the social scene of the Woman's College campus this year.

Among the physical features of the new social and service center of the campus area are a post office with 1735 locked mail boxes; a direct wire to the Western Union office; a large book store; an informal game room; a music listening room; a television room; a ballroom which will accommodate 1200 people, with catering service attached; the office of the Student Government President; the offices of the various campus publications; and a kitchen and dining room.

"Elliott Hall," in the words of Miss Elvira Prondecki, director, "belongs to the students of the Woman's College. It is their building. It will become a department of the Student Government.

"To serve these purposes the building could bear no greater name than that of Harriet Elliott who was instrumental in forming Student Government at Woman's College," she said.

The organization and administration of Elliott Hall will consist of Social Planning Council with the chairman of the council serving as chairman of a student board of directors. Also serving on this board will be three faculty members appointed by the chancellor, Miss Jan Atwood '52, assistant director, and Miss Prondecki.

Elliott Hall will serve as a central social and recreational area meeting the needs of all groups, large or small; it will be the service center of the campus; it will offer cultural and creative outlets; and it will act as an education medium through the role that students will play in its organization and administration.



ELLIOTT HALL . . . linked to Soda Shop, will be center of campus social activity

College Collection Shows WC of Yesteryear

(Continued from Page Three)

Greensboro at a last minute rally of interested citizens outside Durham, Thomasville, and Graham, promising thirty thousand dollars and a 10-acre site, a site that proved to be particularly pleasing to the Board of Directors because it was within sight of the railroad tracks and of Moore's Mineral Springs. As the Durham Weekly Globe reported it, "Greensboro was a winner sure enough. She had the boodle and she got the school."

Less than two years later the General Assembly was presented a bill to increase the state appropriation for the support of the college from ten to fifteen thousand dollars. A clipping from the scrapbooks said, "Woe be to the legislator who will not use his influence to help the girls of North Carolina . . . No Normal School girl will ever bless his home." Senator Campbell spoke eloquently for the bill, ". . . the state got this institution dirt cheap and cannot afford to do without it . . . Just as

our wives are expensive . . . just so will this institution cost the state to keep it . . . It is the ultimate object of training at this school to teach a young woman how to stuff a chicken as well as the head of a dull boy."

The bill passed, but its opponents succeeded in holding the figure to twelve thousand, five hundred dollars.

Another valuable source of the early history of the college is the State Normal Magazine. First published in 1897, it became the Corradi in 1919. In its early years it combined many functions, reprinting commencement addresses and sermons, reporting campus social news, and digesting world news, in addition to publishing the literary efforts of the students.

Class yearbooks are also in the collection, though the annuals for 1916, 1925, 1934, and 1935 are missing. College catalogs, handbooks, Student Government Association minutes prove extremely illuminating about college life. Books,

articles, letters and pamphlets written by students, alumnae, and faculty, personal scrapbooks and class notes from the early days are included.

Many things are needed to round out the collection. The need is greatest for the middle years, from 1900-1935. The Library staff is accumulating current material, such as programs, pictures, scripts for the Senior Unmusical, and recordings of the Founder's Day speeches. But for older material the Library is completely dependent on the gifts of alumnae and faculty. An alumna's contribution will be placed in our new fire-proof building and, as time permits, made available for reference use by alumnae, students, and friends.

Nearly 300 people are required to operate the dining halls successfully, including four dietitians, 45 fulltime cooks and workers, 25 A and T parttime workers, and between 175 and 225 Woman's College girls.

- *Anne Grinnell Grow
- *Janet Handler Joffa
- Rebecca Hardaway Dalton
- Annie Mildred Harrington
- Elae Harrison Dew
- Fay Hawkins Blackman
- Marilyn Hill
- Kathryn Hiett Knight
- Frances T. Holland
- Sarah Holland Neal
- Patricia Hunninger
- Kate Hunter
- Rose H. Hutchinson
- Virginia Ingram
- Mary Kay Jacob
- Joyce Jefferson Gossett
- Peggy Jeffries
- Faye Jenkins
- Nancy Ann Jones Michael
- Martha Jordan
- Patry Jordan Peck
- Barbara Keller Deak
- Wilma King
- Rebecca Kirby
- *Anna Kirkman Smilie
- Martha Anne Knotts
- Beattie Krites
- Jean Lambert Sutton
- *Ramona Lamm
- Sally Lawson
- Frances Ann Leathers
- Barbara Alice Lewis
- Alma Lilly Wood
- Rebecca A. Lloyd
- Helen Margaret Luke
- Wyndell Mason McKinnon
- Nancy McCall
- Alicia McKelthan Williams
- Betty Jean McNairy
- Shirley Mahan
- Virginia McKeithan Edmonds
- Helen Mamber Levin
- Jean Marrow Jordan
- Naomi Marras Marks
- Katherine Marshall Koch
- Wyndell Mason Henderson
- Edith Matthews
- Eileen Metz von Nordoff
- Constance Miller Sweeney
- Eva Miller
- Martha Miller McKnight
- Patry Ellen Miller
- Nancy Montgomery
- Helen Moody Buckner
- Barbara Moore
- Melrose Moore Stocks
- Florence Morrill Melvin
- Margaret Helene Noyahnan
- Irene Myers Barnhardt
- Allene Neal Self
- Betty Newman
- Elizabeth Norman Thiel
- Betty Nutt
- Sally Ogilvie
- Penelope Pantelakos Metropoul
- Bobbie Dean Phillips
- Vivian Pitt Gardner
- Doris Poole Sellers
- Nancy Porter
- Mary Ann Preston
- Catherine Quick
- Peggy Renegar Allgood
- Eleanor Rigney
- Ann Rogers
- Ruby Rumler
- Jean Samuelsen
- Barbara Sanders Booth
- Amelia Schrum
- Alice Setts
- Mary Shackelford Sheulars
- Marie Shaw
- Marilyn Shaw
- Joanne Shoemaker Dickson
- Betty Shuler Scott
- Maria Paul Shuler
- Adelaide Sigmon
- Eleanor Skeels Isell
- Helen Smith Seidl
- Joan M. Smith
- Barbara Sternberger Coe
- Virginia Stover McCreary
- Joanne Teague Brewer
- Sylvia Thomas
- Virginia Thompson Schenck
- Jane Trogonn Reade
- Peggy Tucker
- Betty Tuttle Riley
- Debra Tyson
- Muriel Vail
- *Anne Varner Scarborough
- Elder von Hammerstein
- Anna Lee Waddell
- Ann Lee Wagner
- Doris Walker
- Dorothy Warden Gibson
- Betsy Ware Thompson
- Emma Faye West Barber
- Leah Whitfield
- Emily Williams
- Jean Elizabeth Williams
- Sarah Williams
- Shirley Williams
- Naomi Woodworth Copp
- Kathleen Wray

- Marjorie P. Alford
- Lucy U. Andrews
- Eleanor Annie Lucas
- Bonnie B. Asher
- Patricia Ashley Story
- Nancy Atkins Holdenman
- Nancy J. Atkins
- Jean A. Austin
- Maria Averitt Baconm
- Jan Aycock
- Kuld Ayers
- Nancy J. Ballard
- Clara D. Basher
- Betsy Barber
- Carolyn Barber
- Rosemary Barber
- Barbara Lee Barker
- Emily H. Barlow
- Irene Bass
- Jane Ann Bass
- Mary Bassett
- Opalene Beamer
- Betty Beaufort Moore
- Ruth Benson
- Margaret Bentley Harbour
- Ann Bergen Blankstein
- Lois M. Best
- Betty Gray Billings
- Betty L. Bivens
- Heater Bizzell Kidd
- Emily W. Blackwell
- Nancy Blanton Smith
- Jane D. Bledsoe
- Nancy B. Bogart
- Penelope Bogart
- Hena Hovse Wabster
- Catherine Bectler
- Bulow Bowman McCreary
- Josephine Brooks Hughes
- Ann Brothers Curran
- Evelyn Brown Phipps
- Josephine Bryan Duncan
- Nellie Bryan Gardner
- Charlotte V. Bunch
- Pauline Burchett
- Elizabeth Helen Burgess
- Nancy Burries
- Nancy A. Burton
- Doris B. Byrd
- Carol Byrd Sellers
- Margaret Byrd
- Mary E. Cahill
- Arlene Callender Elmore
- Elizabeth Calvin Johnson
- Dorothy Cameron Helen
- Leona Cameron Gladden
- Peggy J. Cameron
- Ann Camlin
- Iona Campbell
- Mary Anne Campbell
- Frances Campbell
- Marie Carroll
- Sarah Carter Womble
- Lou Ray Cartwright
- Carlene Cath
- Elsa Holtzclaw
- Phyllis Honeycutt
- Iris Hood Veridanno
- Janet Hoover
- Doris Hovis
- Betty Howard Breckenridge
- Jane Hudson Loftis
- Theresa L. Hughes Gehler
- Miriam Huggins
- Amelia Ann Hunter
- Mary Anne Hunt
- Ann Ingram Kirk
- Eugenia Ingram Pearson
- Sarah Jackson Pater
- Florence Jacobson Rosenberg
- Peggy James
- Kathleen Jenkins Hines
- Aima Johnson Templeton
- Elizabeth Gray Johnson Sawrey
- Katherine Johnson Harden
- Margaret Ann Johnson
- Anne M. Johnston
- Janette Jones
- Jean Jones Rich
- Eloise Jordan
- Sara Katherine Jordan
- Neille G. Joyce
- Waldene Kearns Lawrence
- Lawrence (Polly) Keith
- Polly Jean Kennedy
- Montgomery
- Virginia B. Key
- Katherine M. Kilgore
- Elizabeth G. King
- Martha L. Kinman
- Nancy Kirpatrick Hannah
- Elsa Kittrell Anderson
- Carolyn Delt Lyons
- Kathryn Dobbins
- Laura G. Debon
- Laura Dodson Johnston
- Rosemond M. Doughton
- McConnell
- Janet Drennan
- Katherine L. Duken
- Marilyn G. Dunn
- Doris Dwyer
- Ruth Levin Gelsenheimer
- Barbara Lewis
- Pat Edwards
- Dorothy Elliott Stink
- Becher C. Elliott
- Nancy C. Elliott
- Margaret Emerson Emerson
- Mary Jane English Street

- Stacey English
- Lula Loud Frye
- Corinne Etheridge Landis
- Annie Page Everett Blate
- Maria Evans Deal
- Annette Essell
- Mildred E. Farlow
- Ann Farmer Slink
- Mildred Ferguson
- Mary Gladys Plahar
- Ann Flack Roseman
- Mary Fleet Woodley
- Blanche Foster Page
- Ann Fowler
- Lydia M. McKethan
- Joanne McLean
- Barbara Manquon Bowland
- Emily M. Maxwell
- Peggy Jean Gales
- Muriel Lorraine Gallagher
- Willcox
- Johanna R. GsmBill
- Sara Jo Garrison
- Barbara Ann Garvin
- Emmalynn Gettys
- Betty Alice Godwin
- Adele Gold Tucker
- Mary Grace Grady
- Mary Eleanor Gray
- Elsie Green Noland
- Emily U. Green
- Tommie Green Gibson
- Nancy Greene Adkins
- Anne Grier
- Louise Griffin Hill
- Catherine Grinnell
- Betty Gorton
- Shirley Hease Grell
- Betsy R. Haley
- Joanna Corinne Hall
- Helen H. Hall
- Sarah A. Hamilton Kimball
- Nancy Hamlet Clawson
- Alice Rose Harbison
- Frances Harbison Lane
- Alice Lane Hardin
- Elizabeth Harper
- Betty Ann Harzell Simpson
- Betty Jean Harris
- Nancy H. Hart
- Pauline Hastings
- Bobbie Haynes Carnes
- Edith M. Hendrix
- John E. Hester
- Dorothy Henderson
- Helen L. High
- Eileen Oshert
- Elizabeth J. Outlaw
- Elizabeth Parker
- Irene Elizabeth Parker
- Dorothy M. Patterson
- Barbara Patchell
- Patricia Paton Holt
- Geraldine Pearce Durrough
- Carlene Cath
- Caroline A. Pearson
- Myrtle Peoples
- Peggy A. Peters
- Leatrice A. Petreus Poff
- Martha V. Phillips
- Carolyn Pickett
- Jean N. Pitman
- Edith F. Pyle
- Ziphia Post O'Halloran
- Rachel B. Poole
- Mary Poteat
- Anne Powell
- Nancy Pritchard
- Nancy Pritchett Miles
- Evelyn Procter Crawford
- Jean Darden Pullen
- Nancy E. Purves
- Peggy Putnam
- Norma Faye Quin Williams
- Cornelia Quinn
- Mary Emily Hanson
- Hattie Hatchette Borette
- Hilda M. Redding
- Roberta F. Redman
- Patricia Redd Hoover
- Colleen Renegar
- Mary A. Reynolds
- Helen M. Rigby
- Peggy Rimmer Goldstein
- Mary Ann Robinson Coghill
- Jackie Roberts
- Marilee Roberts Grogan
- Emilie Robinson Wood
- Jean Robinson Stern
- Millicent A. Rollins
- Eleanor V. Rose
- Jane Rose Curtis
- Patricia B. Sandford
- Katherine Ruth Poole
- Jeannette Rauter
- Dorothy Ratif
- Patricia B. Sandford
- Helen Mae Sarles Allred
- Julia Scott
- Joanne D. Sechrist
- Gladya Sealy
- Ruth Levin Sechrist
- Nancy Selesman Davidson
- Shirley D. Sharpe
- Mary W. Shearin
- Martha L. Shonfield
- Ann Shildner
- Jo Anne Sides Jennings
- Frances Simon Adams

- Evelyn Sink
- Lula Kathryn Sink
- Nina A. Singleton
- Elizabeth Skinner Rogers
- Carolyn Sykes Smith
- Danny Kate Smith Walthall
- Eleanor H. Smith
- Isabelle Smith
- Walter Smith Lambert
- Janet Smith
- Janice Smith
- Margaret Smith Huxie
- Clara M. Smithe
- Lorena Snell
- Barbara Southall Edwards
- Dorothy J. Spahr
- Joanna Spight
- Nancy Jane Burgin
- Carolyn Burton
- Reba Lee Hynum
- Glenna Byrd Klutz
- Jane Cabaniss
- Betty Jean Callitout
- Joan Carpenter
- Bessie Cloutwright
- Faye F. Caswell
- Laverne Sykes
- Ann Talley Coghill
- Martha L. Talley
- Elizabeth Tanch
- Sybil Taylor
- Mary E. Tart Fowler
- Frances Taylor
- Lois Taylor
- Mimi Tombo
- Rebecca Ann Thomas
- Grace Thompson Royster
- Jeannette Thompson Morris
- Mary Lillie Thompson Lennon
- Peggy A. Thompson
- Virginia Dare Thompson
- Odessa Terrence
- Betsy L. Tunstall
- Helen T. Turlington
- Jane Vann Ledbetter
- Anne Van Horne Mims
- Anne Vessey Koonce
- Imogene Walker
- Hattie M. Walsh
- Hilda Wallerstein
- Wendy Ward
- Maxine Warren Cox
- Carolyn Louise Taylor
- Mary F. Weatherston
- Sally Mae Weaver
- Dorothy West
- Francie Marie White
- Laura White Wolfe
- Alice Whitehurst Swiggett
- Nancy P. Whitley
- Gwendolyn Wilborn
- Sarah Mel. Wilkins
- Nas S. Wilkinson
- Emma Jean Willard Gilbert
- Betty Williams Dickerson
- Clouse C. Williams
- Jacqueline R. Williams
- Louise Williams
- Nancy P. Williams
- Christella T. Williams
- Adelle Williamson Mann
- Jane Williamson Platt
- Barbara Williford Owens
- Laura Wilson
- Elizabeth Wimbush Warner
- Ann B. Winslow
- Renthea Woodworth Dodson
- Patricia A. Workman
- Nancy Wornley Hart
- Barbara Anne Wyatt
- Beulah U. Yates
- Ann K. Young
- Elizabeth Jane Young
- Mary Ruth Young
- Lillian E. Zachary
- Martha Zachary Shuford
- Sally-Ann Zeiger Cole

- 1952 (56 1/2%)
- Betty Lou Abbott
- Diana Addison
- Kay P. Agner
- Mary Charles Alexander
- Phyllis Ann Alligood
- Patricia Anderson Sholar
- Bonnie Angstadt
- Rachel Hackney
- Margaret Arthur Miller
- Janice Atwood
- Elizabeth Bachman
- Jo Ann Bailey
- Rachel Hill
- Mary Ann Barlow
- Mary Louise Barnes
- Doris Barrett
- Betty Barringer
- Mattie Harringer
- Nancy Barton
- Evelyn Basson
- Mary John Bass
- Janet M. Batts
- Viola Batts Rus
- Elizabeth Baucom Morgan
- Virginia Beck
- Peggy Helen Goodman
- Sarah Bennett
- Evelyn Berger
- Carolyn Biggerstaff
- Marjorie Bignoff
- Joyce Biggs
- Marie Blake
- Virginia Bobbitt

- Jacqueline Bodie
- Rosemary Honey Nell
- Evelyn Boone
- Elizabeth Bonalous
- Sue Boykin
- Elizabeth Boyles
- Elizabeth Bracken
- Laura Bradford
- Anna Bradford
- Sara Breedon
- Alice J. Brewer Harris
- Virginia Bridges
- Clara Brock
- Mae Brock
- Margaret E. Brown
- Virginia Brown
- Betty Buehard
- Nancy Jane Burgin
- Carolyn Burton
- Reba Lee Hynum
- Glenna Byrd Klutz
- Jane Cabaniss
- Betty Jean Callitout
- Joan Carpenter
- Bessie Cloutwright
- Faye F. Caswell
- Laverne Sykes
- Ann Talley Coghill
- Martha L. Talley
- Elizabeth Tanch
- Sybil Taylor
- Mary E. Tart Fowler
- Betty Jean Conley
- Virginia T. Conner
- Mary Jo Cox
- Elizabeth Crescenzo
- Anne Craws
- Bertha Crockett
- Nancy Cross
- Susan Krimburg
- Hazel Kinnard
- Janet Daniels
- Ann David
- Alma Davis
- Clara Deane
- Dorven Davis Reynolds
- Helen Day
- Pattie B. Denton
- Carolyn Dietz
- Betty Alice Dixon
- Margaret Doek
- Betty Jean Dowell
- Nancy Jane Dowell
- Mary Driver Sims
- Elizabeth Driscoll
- Betty Duncan Fiddle
- Annette Dunham Strouse
- Betty Duplap
- Editha Dunham
- Shirley Ebert
- Mary Frances Elsen
- Betty Evans
- Gladya Everett
- Grace Farrer
- Betty Duncan Fiddle
- Janet Everett
- Peggy Lynn Ezzell
- Peggy Marie Farrell
- Grace Farrer
- Joan Farrow
- Alice Faucette
- Frances Ferebee
- Rose Fincher Patterson
- Marilyn Fisher Lent
- Mary Roberta Fisher
- Mickey Fletchman Sugar
- Frances Fowler
- Betty Anne Franklin
- Betty J. French
- Kathryn Friday
- Edna Friedman Bernanke
- Sally Fulford
- Katherine Furr
- Geraldine Gardner
- Bea Gating
- Lucille Gay
- Betty Geisman Jolley
- Nannie Gibson
- Clara Gilbert
- Elizabeth Goss
- *Lillian Gravely
- Nancy Gray Winslow
- Elizabeth Green Hauser
- Bernice E. Greenberg
- Shirley Hack
- Bonnie Angstadt
- Rachel Hackney
- Ann Hall
- Barbara Hall
- Marion Hall
- Mary Rose Hall
- Dorothy Hallenbeck
- Doris Hancock Allen
- Naomi Hanna McCluskey
- Elizabeth Harlan
- Margie Harding
- Geraldine Harman Burch
- Betty Gray Harrington
- Katharine Harrington
- Barbara Ann Harris
- John Harris
- Patricia Harris Sumrel
- Joan Harrison
- Virginia Harrison Parker
- Eleanor Harutunian
- Tommie Haywood
- Jay Helms
- Elizabeth Henderson
- Jo Ann Hendrix
- Sara Henneberger
- Ruth Hippe

- Louise Hojdes
- Dorothy Hogan Baumight
- Margaret Holland
- Elaine Holly
- Catherine Holm
- Carol Gray Hooks
- Susan Hooks
- Laura Ann Hoots
- Barbara Horne
- Joyce Howe
- Nancy Howell
- Edith Hoyte Dobbins
- Catherine Hudson
- Doris Huffines Bernhardt
- Betty Huffman
- Peggy Lee Hull
- Norma Hunley
- Maria Huttocker
- Grace Jahn
- Jacqueline Jeraigan Ammons
- Barbara Jobe
- Josephine Johnson Jackson
- Joyce Johnson Harbour
- Miraly Johnson
- Nancy Johnston
- Peggy Johnston
- Barbara Joan Jones
- Betty Jewel Jones
- Gean C. Jones
- Lillian G. Jones
- Pauline Johnson Jones
- Barbara Jordan Deatheridge
- Lillian Joyner
- Ruth Margaret Joyner
- Nancy Keck Jennings
- Elizabeth Kerseno
- Elizabeth L. Kent
- M. Elizabeth Kent
- Helen C. Key
- Susan Kimbrough
- Josephine Kinnard
- Marie King
- Kathryn Kirschner
- Peggy Jean Lamm
- Rebecca Lamy
- Rebecca Langdon Hunt
- Anne L. Lawing
- Dorothy Lawrence
- Evelyn Lawrence
- Frances Leatherwood
- Elaine Ledbetter
- Mary Virginia Lewis
- Mary Ola Lilly
- Janet Linker
- Helen Lindwell
- Martha Lippard
- Callie Lou Little
- Lila Loftis
- Alma Loftness
- Martha Lohr
- Mary Moore Lovett
- Alice Wilson Lowrance
- Elizabeth Lynch Tolson
- Louise Madison
- Nan Malley
- Nancy Maples
- Lyle Ann Marley
- Faye Marshall
- Virginia McFarland
- Elizabeth McInnis
- Jane McJunkins
- Caroline McLean McAdams
- Elizabeth McLeod Sherwood
- Nina McLeod
- Betty McKnight
- Betty Will McReynolds
- Nancy Medford
- Martha Ann Medlin Jobe
- Doris Miller Ryan
- Frances Miller
- Pat Miller
- Rachel D. Miller
- Patty J. Mills
- Carolina Moon Sharpe
- Louise Mooney
- Gloria Anne Monk Smith
- Jane Moore Holoman
- Fay Morgan Wortham
- Joyce Morton Tate
- Dorothy Moser
- Shirley Sue Muiwee
- Janice Murchison
- Oiga Murphy Ivey
- Mary Ann Wainwright
- Jaye Neely
- Mildred E. Newitt
- Sharon Newnam
- Jessie Nicholas
- Marlene Oakley
- Lucine O'Brien
- Sara Oden
- Eugenia Okay
- Virginia Oliver
- John Owen
- Lucy Page
- Kathryn Parker
- Mary Lona Patterson
- Raelelle Patterson
- Ann Payne

- Gwen Peeler
- Ethel F. Pendleton
- Betty Jo Petrea
- Margaret E. Petrea
- Peggy Ann Phelps
- Mildred Phillips
- Peggy Phillips Tufis
- Jane Phillips
- Louise Pickard
- Sue Pickle
- Ann Pierce
- Lucette Pillatt
- Joyce Pinchback Holt
- Jeane Pinner
- Ann Pollard
- Imogene Pons
- Bobbie Lee Potts Ashley
- Joyce Powell
- Ramona Powell
- Ann Preston
- Ina Mae Price
- Frances Pridemore
- Rodgeray Rau
- Antoinette Reavis
- Lora Jean Reeves
- Peggy Richardson
- Betty Richardson
- Eileen Rickards
- Joan Roberts
- Carol Rogers
- Pauline Rooker
- Elizabeth Rose
- Dorothy Rason
- Nancy Rae Rothrock
- Anne Russell Applegate
- Frances S. Rowland
- Miss Julie Barrett
- Miss Helen Barton
- Miss Helen Duffy Bridgers
- Miss Ethel Butler
- Miss Frances Butler
- Miss Anne Fulton Carter
- Miss Ruth Abbott Clarke
- Miss Agnes N. Cox
- Miss Bernice Welch Dean
- Miss Evelyn Deaper
- Miss Annie Deane Funderburk
- Miss Lois Frazer
- Miss Margaret Haigler
- Gerringer
- Chancellor Edward K. Graham
- President Gordon Gray
- Miss Ethel Green
- Miss Ione H. Gran
- Dr. Eugene Guider
- Miss Ruth Gunter
- Miss Louise Atkins Hammond
- Miss Edith Harwood
- Miss Kathleen Pettit Hawkins
- Miss Elizabeth Hathaway
- Miss Josephine Hoge
- Miss Marjorie Hood
- Miss Sarah Hopper
- Miss Evelyn Howell
- Miss Florence Hughes Oehler
- Miss Eugenia Hunter
- Miss Mary Lee Alford Hunter
- Miss Minnie Middleton Hussey
- Dr. W. C. Jackson
- Miss Betty Brown Jester
- Miss Sarah Wilson Jones
- Miss Betty Perry Kirk
- Miss Marjorie Leonard
- Miss Ella Mae Norman
- Livingston
- Miss Shirley Mahan
- Miss Betty Wharton Newland
- Miss Mildred Newton
- Miss Mildred Orrell
- Mr. James Painter
- Miss Barbara E. Parrish
- Miss Helen Pickard
- Miss Nancy Porter
- Miss Jessie Potts
- Miss Virginia Mae Powell
- Dr. L. Richardson Preyer
- Miss Eloise Taylor Robinson
- Miss Lettie Hamlet Rogers
- Miss Elizabeth Sampson
- Miss J. Ann Schamburger
- Dr. Mary L. Sherrill
- Miss Lydia Gordon Shivers
- Miss Mary Elizabeth Barwick
- Miss Jean Minnie Smith
- Miss Sara Henry Smith
- Miss Patty Spruill
- Mrs. Charles Stafford
- Miss Cora Strong
- Miss Jane Summrell
- Miss Fathierne Taylor
- Miss Lois Taylor
- Miss Mary Tennant
- Miss Sue Underhill
- Miss Virginia Van Dyke
- Miss Marion Watson
- Miss Frances Lee Wolfe

- Mary Jo Willis
- Yvonne Willoughby
- Betty Grey Wilson
- Helen E. Wilson
- Elizabeth Wilson
- Elizabeth Winfield
- Nancy Witherspoon
- Ahnstrie Wood
- Janice Bernice Wood
- Sara Wyrche Casper
- Maxine Yarbrough
- Iris Young
- Jean Young

Religious Groups Sponsor Denominational Speakers

Non-Credit Courses Given To Students Interested

Under the auspices of the Religious Activities Center and sponsored by Inter-Faith Council non-credit courses in religion are being offered this year at Woman's College.

Three courses of six weeks' duration, held twice weekly in the Religious Center, have been developed around the topics: "A Study of Genesis," "The Prophets and Problems of Today," and "Religion in the United States," a survey course.

Miss Virginia Pierce, counselor and a graduate of Wellesley with a major in Bible, directs the courses.

A film and visits to local churches are other features of the work. Second semester will be dedicated to a study of Mark and a second survey course.

Other religious activities, under the overall supervision of Mrs. Ruth Abbott Clarke, co-ordinator of Religious Activities, have included two university sermons.

The Hillel Foundation, Jewish, sponsored a Rabbi, who besides delivering a sermon, was available for class lectures and interdenominational meetings.

The Episcopal students brought to the campus a speaker for the Penick Lecture Series which lasted four days and was devoted to the topic, "Worship."

Inter-Faith council this year also published and distributed to incoming freshmen and all other students "An Essential Phase of Woman's College Life," a handbook giving pertinent information about religious organizations, their officers, advisors, ministers, and regular time and place of meetings.

Nursery School N. C. Child Center

Woman's College is breaking ground for a Nursery School whose influence will eventually extend into every North Carolina high school, according to Dr. Katherine E. Roberts, Dean of the School of Home Economics here.

The new building will be located on Melver Street within close reach of the Home Economics school and it is expected to open its doors in the fall of 1953.

Dr. Roberts emphasizes that the completion of the building will enrich the nursery school program and will make a major contribution to the entire state in that better teaching methods will be established in high school home economics where courses in child development and family relations are taught on a limited scale now.

It is also Dr. Roberts' hope that laboratory experience from direct handling of children by high school girls can be provided by the schools as a result of the Woman's College program.

Dean Roberts expressed, in addition, a desire that the new nursery school be envisioned as a center where understanding of human relationships is promoted as well as the school's being a center where not only Woman's College students but North Carolina citizens can observe and benefit from a well developed child life program.

A prompt reply to a Class Agent's request for contributions to the Alumnae Fund will save her extra writing and you added reading!

Alumnae gifts yield Alma Mater greatness.



CITIZENS OF TOMORROW . . . work and play at Woman's College Nursery School

One of Top Ten in U.S. Teaches Philosophy At Woman's College

Gentle of voice, white of hair, slight of build, Thomas Hayes Proctor, professor of Philosophy, is rapidly endearing himself to the students of Woman's College as he did to those of Wellesley, who dubbed him "Mr. Plato."

Named in 1950 by Life Magazine as one of the Ten Greatest U. S. Professors, Dr. Proctor, English by birth, is visiting lecturer at Woman's College for this year, succeeding Dr. Warren Ashby, who was awarded a Ford Fellowship for study at Princeton.

The cello-playing lover of wisdom who, Time magazine reports, never found time to write a book because he was so "passionately excited by teaching," has been absorbed in that profession for over thirty years, twenty-eight of which he spent at Wellesley.

What does a man who has worked with American College girls think of his life think of them?

"I'm impressed," he disclosed, "as I'm always impressed with American students, by their freshness and charm. There's a naive charm about them, and an absence of any marked difference between the professor and the student. The American student has never been snubbed, and she doesn't expect to be; she meets her professors on a friendly basis."

This friendly relationship meets with Dr. Proctor's approval as being of mutual benefit to student and professor.

Putnam Awards \$2,000 Manuscript Prize

G. P. Putnam publishers will award to a student of the Consolidated University of North Carolina, including Woman's College, for the first time this year a prize of \$2,000 for the best manuscript of either fiction or non-fiction.

Works of a strongly scholarly or highly specialized nature are not to be submitted. To be eligible for the contest a manuscript must consist of at least 40,000 words with a detailed synopsis of the unwritten parts of the book.

Three judges are to be selected each year, one chosen by the University, one by G. P. Putnam's Sons, and the third will probably be a distinguished author or critic. The names of these judges are to be released by January 1, 1953.

After the first year, 1952-53, the award will probably be made in June, at the end of the academic year, but in the initial year of the contest, in order to give contestants sufficient time to prepare their manuscripts, the deadline for entries will be June 1, 1953.

Student Scholarships Reach 199 This Year

(Continued from Page One) who are taking the home economics course. The Kroger Company provides for two \$200 scholarships also to freshmen in the home economics course.

There is one \$1200 scholarship for a foreign student. The money for it is raised through the student Purse Drive by Service League.

The United Daughters of the Confederacy offer twelve \$100-150 scholarships to students who are descendants of Confederate veterans.

Many additional scholarships are offered. The Mary Channing Coleman fund is being used for the first time this year in scholarships going to three physical education majors.

Various alumnae chapters throughout the country are establishing scholarship funds to help girls from their own counties. In one small town a group of nine alumnae contribute two dollars each which is given to a senior who needs financial assistance to purchase books and supplies.

Some profits are derived from the college book store and soda shop which go into the scholarship fund.

Loan funds are available to the students with a rate of interest at three per cent which begins as of June 1 after the student leaves college.

There are 529 girls doing self-help work; about 200 of these working either full-time or part-time in the dining halls. The students also work in the post office, the library, book store, and in some offices and stores in Greensboro.

Mclver House



Before

Home of College Founder



After

Faculty Extends Social Science Cuts

Social Science Forum cuts were granted this year for the one-day session to students who had averaged a "C" or better.

This plan was put into effect by the Faculty Advisory Committee as announced by chairman of the group, Dr. Malcom H. Hooke.

"After careful study of the recommendation of the Faculty-Student Reviewing Committee and of the Social Science Forum Committee, the Advisory Committee, acting in accordance with the special authority given it by a vote of the Faculty on October 21, 1952, has decided upon the following regulations concerning class attendance during the Social Science Forum of this year:

"A student in good academic standing ("C" or better) may, with the permission of the instructor, substitute attendance at the morning session of the Forum for class attendance, providing the Forum session is at the same hour as the scheduled class.

"Instructors in Social Sciences may substitute attendance at the Forum session for attendance at their third and fourth period classes."

The regulation did not apply to laboratory classes and did not affect social science majors who, regardless of academic standing, could be excused on recommendation of the department head.

School Enrolls 500 Girls In First Semester Art

The Art Department of Woman's College today offers the degrees of Bachelor of Arts, Bachelor of Fine Arts, and Master of Fine Arts.

In addition, art is a required course for majors in elementary education, home economics, retailing, and recreation.

Five hundred students are presently enrolled in the department, 125 of them art majors.

Its faculty, headed by Mr. Gregory D. Ivy, consists of eleven members, several of whom have studied abroad.

This year, a number of exhibits are being planned. Elliott Hall is currently the scene of a textile exhibit, sponsored in conjunction with the home economics department. An exhibition on the American Indian will soon be shown in Weatherspoon Gallery, followed by a one-man show by Dr. John Opper, a member of the faculty, featuring the avant garde type of abstract.

A complete reorganization of the art department's entire curriculum is now being planned. This revision is aimed at a better integrated approach to the subject of art.

The art department now is scattered about the campus. Classes are held in the basement and floors one and three of Melver, the top floor of the old laundry, and the upper part of the old library.

Student Enrollment First Semester--- Tabulated by North Carolina Counties

	52-53	51-52	Madison	4	4
Alamance	49	51	Martin	10	13
Alexander	12	11	Mecklenburg	153	155
Alleghany	6	5	Mitchell		1
Anson	17	16	Montgomery	6	6
Ash	6	10	Moore	21	29
Avery	5	3	Nash	31	25
Beaufort	10	15	New Hanover	33	37
Bertie	9	8	Northampton	7	6
Bladen	6	7	Onslow	11	10
Brunswick	5	5	Orange	19	18
Buncombe	77	79	Pamlico		1
Burke	15	16	Pasquotank	9	8
Cabarrus	23	23	Pender	9	12
Caldwell	19	14	Perquimans	3	3
Camden	2	1	Person	6	7
Cartaret	7	11	Pitt	7	9
Caswell	11	8	Polk	6	6
Catawba	22	24	Randolph	27	28
Chatham	14	20	Richmond	15	17
Cherokee	4	5	Robeson	25	37
Chowan	1		Rockingham	51	44
Clay	2		Rowan	28	40
Cleveland	29	29	Rutherford	17	16
Columbus	7	18	Sampson	22	29
Craven	9	12	Scotland	4	7
Cumberland	46	39	Stanly	33	30
Currituck	3		Stokes	6	5
Dare	2	1	Surry	30	26
Davidson	45	49	Swain	3	3
Davie	4	4	Transylvania	8	10
Duplin	15	12	Tyrrell	3	4
Durham	38	39	Union	17	18
Edgecombe	10	19	Vance	17	16
Franklin	5	6	Wake	77	80
Forsyth	112	101	Warren	10	12
Gaston	51	63	Washington	1	1
Gates	2	6	Watauga	6	3
Graham	4	3	Wayne	30	23
Granville	19	17	Wilkes	22	11
Greene	3	2	Wilson	25	22
Guilford	311	293	Yadkin	21	16
Halifax	22	26	Yancey	1	2
Harnett	18	20			
Haywood	19	16			
Henderson	1	17			
Hertford	4	4			
Hoke	3	2			
Hyde					
Iredell	36	33			
Jackson		2			
Johnston	32	34			
Jones	1	1			
Lee	10	10			
Lenoir	17	20			
Lincoln	11	9			
McDowell	5	5			
Macon	8	10			
TOTAL				2074	2104
★					
EIGHT COUNTIES WITH LARGEST REPRESENTATION					
	52-53	51-52			
Guilford	311	293			
Mecklenburg	153	155			
Forsyth	112	101			
Buncombe	77	79			
Wake	77	80			
Gaston	51	63			
Rockingham	51	44			
Alamance	49	51			
Davidson	45	49			

WC Landmark Topples; Mclver House Scrap-Built

In mid-October a sixty-year-old Woman's College landmark gave way before the building and improvement program of the campus, and two-story, ten-room Melver House, built in 1892 as a residence for Dr. and Mrs. Charles Duncan Melver, was torn down by a crew of workmen.

During the lifetime of the Melvers the house served as a hospitality center for the campus. After Dr. Melver died in 1906, the State legislature offered the home to Mrs. Melver for her lifetime.

Madcap Mission Results In Secret Trip to Crussia

The Junior Class offered "Madcap Mission" to a capacity audience at Aycock Auditorium November 12, when more than half the class joined forces to present the two-act musical comedy.

Featured were more than 140 voices in the chorus and an unusually large cast and crew.

The curtain rose and fell on two recent graduates, Micky Smith and Honey Comb, who were sent as peace delegates to the all-powerful dictator of "Crussia." On board ship they met two UNC graduates, Larry and Rodney, who had been assigned the same mission.

Immediately war was declared between the saner of the peace delegates, Larry and Mickey, although comedians Honey and Rodney got along quite well — in the good old Consolidated University spirit.

After touring "Paree," all four put business before pleasure and went to the court of the "Crussian" dictator, where Honey and Micky persuaded His Omnipotence to accept their proposal, to the consternation of the men, especially Larry, who felt that his male ego had been injured beyond repair. But back home again, Micky swallowed her "Coit Hall" reserve just in time for a happy finale.

Variety was added to the production by the Apache, tap, cancan, and interpretive dance sequences which were choreographed by Peggy Malone.

and for almost forty years she lived there.

It is a commentary on building prices that just prior to the opening of the college in 1892, a special session of the executive committee of the Board of Directors authorized the expenditure of \$9,000 for the addition of rooms to house twenty-two students in the dormitory as well as for the President's house.

The house was built largely of material left over from the Administration building and of old brick, and was ready for occupancy within six weeks from the time it was authorized.

During the Melvers' occupancy, they paid \$15.00 monthly as rent for the building, and also took in some faculty members, since the college was almost in the country at that time and no nearby housing was available for teachers.

Following the death of Mrs. Melver in 1944, the house was used as a dormitory for service women studying at Woman's College under the G. I. Bill. And last year all graduate, older, and married students stayed in Melver House.

This semester, twenty-four such students were transplanted to Woman's Hall, and the old dwelling gave way to progress.

Strange Missile

What began as a normal day for Dr. Franklin McNutt, head of the WC graduate school and professor of education, ended with nothing less than a flying saucer.

On his way to class one morning, Dr. McNutt discovered a bright and shining object "just messing around" in the firmament.

Upon checking with proper weather authorities, the rather astonished professor learned that the Weather Bureau had not sent up a balloon, and that the wind had been blowing from the north, the opposite direction in which the object was moving.

Dr. McNutt's saucer was lacking the usual windows, men from Mars, etc., and far be it from him to say he saw a flying saucer. He only knows what he saw — and that was quite enough, thank you!

Skating Leads Monday Night Event

The Terrace of Coleman Gymnasium roars with the sound of steel wheels revolving to the recorded rhythms of waltz time.

The roller skating, a new feature of Monday Night Recreation which began in October, is the main attraction of the evening program as about fifteen girls come out to test their equilibrium and skill.

The rink is available each Monday night for those who enjoy the sport or who would like to learn roller skating.



CONGA LINE . . . on the skating rink, no less. Skate lovers meet in group on Saturday afternoon

Numerous Fellowships Bring Honor to Faculty, Students

Two Alumnae Receive Fellowship Awards

Indicative of Woman's College rising standards in academic circles is the outstanding recognition to come her way during the past year in the fields of grants and awards.

College representatives receiving honors are eight faculty, three students and two alumnae.

FORD FELLOWSHIPS

Four members of the faculty were awarded fellowships for 1952-53 by The Fund for the Advancement of Education created last year by The Ford Foundation.

Two hundred and twenty-one recipients of the fellowships represent 160 colleges and universities in 42 states. This year's grants which total approximately \$1,400,000 and average close to \$6,000 each, are a part of the fund's program aimed at strengthening liberal education in colleges in the United States.

The Woman's College recipients are Dr. Richard Bardolph, associate professor of history; Dr. Lenore R. O'Boyle, assistant professor of history; Dr. Eugene E. Pfaff, professor of history, all studying at Harvard; and Dr. Warren Ashby, associate professor and head of the department of philosophy, studying at Princeton.

CARNEGIE INTERNSHIP

Dr. Frank A. Laine, assistant professor and head of the department of classics at Woman's College, has been designated one of 12 recipients chosen from the entire country to receive internships in general education at Harvard, Yale and Columbia, for 1952-53 provided by the Carnegie Corporation.

FULBRIGHT SCHOLARS

A graduate student of painting and two instructors have been granted Fulbright Scholarships for study abroad by the U. S. State Department.

Raford Miller Porter, graduate student, was selected as a Fulbright Scholar for 1952-53 for study of the art and culture of India.

Miss Helen A. Bacon, instructor for the past year in Latin and mythology here, is centering her study of the classics in Athens, Greece, and is traveling in that part of Europe.

Miss Laura Anderton, counselor and instructor in biology, was awarded a scholarship for study at the University of London for nine months beginning in September.

PAN-AMERICAN SCHOLARSHIP
Miss Helen Cutting, assistant professor of Spanish at Woman's College, was chosen one of five Americans selected by the Organization of American States (Pan-American Union) to receive scholarships at the University of Havana the past summer.

GENERAL EDUCATION SCHOLARS

Two seniors of Woman's College were awarded scholarships for 1952-53 by the General Education Board.

They are Glenna DeWitt of St. Petersburg, Fla., and Freda Ward, Route 2, Salisbury. Both were elected last spring to membership in Phi Beta Kappa.

Miss DeWitt, a history major was president of the senior class and had the highest academic average in her class of 400. Miss Ward, an English major, was the second highest ranking student in the senior class.

A. A. U. W. FELLOWSHIP

Zoe Swecker, '46, who has been working on her doctorate at the University of Chicago, was awarded a \$1,500 fellowship by the American Association of University Women. She planned to continue her studies at the University of Chicago.

BROWN UNIVERSITY FELLOW
Margaret L. Coit '41, author of the Pulitzer Prize biography, "John C. Calhoun," was one of three scholars who have been named President's Fellows of Brown University, R. I.

She is working on a full-length biography of Bernard W. Baruch. She is using the \$4,000 grant to continue her study of Baruch's private papers and to widen the scope of her research. She plans to visit people who have known him well.

IBM Courses Taught To Beginner Typists In Summer School

Standard Methods Keep WC Students at Front Of Business Practices

Typewriting students of the Woman's College, at least those who took the course in electric typewriting offered for the first time in the 1952 Summer Session, can without a qualm, tell their prospective employers that they can operate the electric typewriters which are winning such a prominent place in the business world.

There was no selection of the students who would be taught this skill on the I. B. M. Electric Typewriter — Standard Model.

Those students who enrolled for beginning typewriting were placed in this class, which used the electric typewriter for five weeks and transferred to the manual machines during the last week of the six weeks summer session. The transfer was made with little difficulty.

It will be a consolation to the old graduates and to those still here who have had to learn on the manual machine to find that two common pitfalls — developing a precise touch, and learning not to look at the keyboard — bothered these students of the electric typewriter very little; for no matter how a typist strikes the key, the imprint is the same, regardless of touch. The substitution of a key for the carriage return lever helps eliminate the formation of the troublesome habit of looking up when throwing the carriage.

And to former and present students who are perhaps teaching typewriting, Miss Mildred Orrell, AB '51, MA '52, an instructor in the Business Department, who taught the first course here, says that most of the usual techniques, methods, and materials are satisfactory in teaching the course.



INTERNATIONAL BUSINESS MACHINE . . . electric typewriting technique taught beginners in summer school experimental course

Late Election Fever Reached High Pitch

Students Stage Rallies, Debates End in Voting; Stevenson Favorite

National election fever raged high among students at Woman's College this fall.

THE CAROLINIAN, student newspaper, conducted campus polls and ran columns by students, faculty and interested persons.

Students held rallies and climaxed events with an election.

On November 4, Woman's College voters proclaimed Adlai Stevenson the man of their choice by a 56 per cent vote in the mock presidential election.

Sixty-three per cent of the student body, or 1,495 out of the total enrollment of 2,361, participated in the campus-wide poll.

On the national scale, eighty per cent of those students who said they were eligible to vote this year actually did go to the polls.

Of those expressing preference for Stevenson, 78.7 per cent voted in the national election; 79.2 per cent of those favoring Eisenhower cast their votes nationally.

Campus participation in the heated presidential battle was perhaps greater this year than ever before, with the advent of a television set in every residence hall and "I Like Ike" or "Hooray Adlai" parties in almost every room.

Tension throughout the campus mounted as all-night vigils produced more and more shattered nerves and TV eyestrain.

It was an election in which, for the first time in many years, the campus choice was not the nation's choice.

Alumnae President Ill

Mrs. Louis Hall Swain, (Virginia Sloan '28) President of the Woman's College Alumnae Association, underwent an operation at Rex Hospital in Raleigh, her home, in early November.

Mrs. Swain has returned to her duties at Needham Broughton, High School where she teaches Home Economics.



STUDENT ARTS FORUM COMMITTEE . . . chooses paintings for 1952-53 Arts Forum display

Band Puts in Appearance As Extra-Curricula Activity

In 1952 the Woman's College Band has finally come into actuality after years of hoping and striving by a few energetic people on campus.

This organization, although in no way resembling the original group, can be traced back to the five-piece dance band of 1949 called the "Darlinettes."

They were headed by two string bass players, two pianists, a trumpet, an accordionist, and two vocalists. The Darlinettes of '49 played for a number of out-of-town engagements.

The following year, with two-fifths of the original number remaining, Mary Elizabeth Sampson, trumpet player, began scouting for talent and came through

General Education Plans Experimental Courses

(Continued from Page One)

eral education from the student viewpoint.

The overall tone of the whole program, according to Dr. Friedlaender, is that of finding out how good is the college.

The attempt is to appraise whether or not the existing program is the kind needed for North Carolina girls or whether it can be improved upon.

Alumnae are participating in the evaluation in that Chancellor E. K. Graham allocated to evaluation \$2,500 from the unrestricted funds of the 1951-52 alumnae fund gift.

Alumnae also will be offered the opportunity to answer questionnaires and interview studies to be focused on their interest, attitudes and activities.

The student body is working on a student evaluation of teaching which will involve only students and faculty.

Additional developments which have come from the general education work of the past two years include the receiving of four Ford Fellowships and one Carnegie Internship by five Woman's College professors for study at general education universities during 1952-53.

Another is an exchange of a Woman's College professor to Harvard for a general education lecturer in humanities here from Chicago.

Hallball Novel Game in U. S. Sports Annals

Hallball, a brand new game, unique with Woman's College, was introduced to this campus October 22 to more than one thousand elated and approving fans.

The Gertie Gridiron Greats of Mendenhall tied the Phantoms of Shaw Hall in the driving game at 5:00 p. m. on the hockey field.

with fifteen girls who were interested in making music (outside the Music Department). These Darlinettes were heard at various festive occasions on campus.

This year Mary Elizabeth's crusade began to show results. Not only did she use posters and locals but on registration day she joined the registering staff in the gymnasium and accosted a large percentage of Woman's College students inquiring if they played band instruments and would play in the College Band.

A director was found in the person of Harold Atkisson, a newcomer in the Music Department, and with the election of officers Mary Elizabeth became president.

The College Band serves girls who, having been band members in high school, realize valuable training and enjoyment derived from band work.

Hallball, a passing game establishing passing as the only means of advancement, and a game of downs, made a great hit with the spectators due to its spirit and its speed.

This was the first game of Hallball ever to be played in the history of sports.

The game of Hallball was originated by the college's own Miss Ellen Griffin of the school of physical education. The new game has created enthusiasm, teamwork, and spirit. In Hallball no body contact is allowed. Fancy and fast footwork, a strong throwing arm, and timed and alert catching are musts.

Other games are in the making, for Hallball has made a hit with students and faculty!

This is considered the greatest thing in sports that has happened at Woman's College since Mary Channing Coleman introduced "Milestones in Physical Education" here in 1920.

When the student body has pork chops at a family-style dinner, 775 lbs. of pork loin are bought; 1400 lbs. of turkey are eaten at Christmas; and at a normal family meal 25 lbs. of butter are consumed.



HALLBALL . . . sports sensation at Woman's College. Extra-curricula game played first time in history of sports

New Term Invades Campus Vocabulary

You hear it. You feel it. You know it is here. Wherever you go you find it.

A new word has come into its own in the Woman's College vocabulary — EVALUATION. There are two types of evaluation under way here:

Evaluation of educational program — which concerns itself with an examination of the effectiveness of the curriculum at the college and will concern itself with an examination of the results of experimental courses to be initiated during the coming year in connection with the General Education Program.

Student Evaluation of Teaching — a project initiated and to be directed by students as they set up criteria to say what they think of the teaching of their professors. This process will be between student and the individual faculty alone with absolutely no administrative contact.

Each is integrated with the General Education program in that they are testing the effectiveness of what the college is doing in educating a student. They are separate in that they are handled by different groups.

These efforts are not to be confused with the criteria adopted by the Chancellor as a guide in making faculty promotions and appointments.

The purpose of evaluation at the college is not to bring about a change for change's sake, but to try to answer objectively the questions: "How good are we?" and "How good a job are we doing?"

Budget Request Reaches \$3,300,000 in 1953-1955

(Continued from Page One)

Building, of the Music Building, some equipment for the Shop and Maintenance Building, new physical education outdoor facilities, a new Art Building, a general college classroom building and certain other maintenance improvements.

The requested increase in the maintenance budget of the Woman's College totals \$700,000. Included in this figure is money for new staff positions, instructional equipment and supplies, salary increases, plant maintenance, the student welfare program, and administrative costs of the annual alumnae giving program.

Recommendations of deans and department heads were carefully weighed in the development of the figures which were presented to the Advisory Budget Commission.

The University also asked the Commission to make funds available to insure summer school salaries at the figure contractually agreed upon.

President Gray in thanking the faculty and staff who had worked toward the preparation of the budget request added:

"It is my belief that our requests embody to the best of our ability constructive Faculty thinking on the operational needs of the College for the years immediately ahead."

Through the Alumnae Fund Program 26,000 alumnae join in a common bond for the Woman's College.

Controversy on Teacher Education

(Continued from Page One)

Opposition came from Dean Guy B. Phillips, Chairman of the Committee on Collaboration with the State Department of Public Instruction; Dr. James E. Hillman of the State Department of Public Instruction; and Dr. Leo Jenkins, Dean of Education at East Carolina College.

Grounds for their opposition were, they said, based on the fact that a review of certification would imply that there is something wrong with the education of elementary teachers and that a counseling committee would duplicate the work of existing committees (State Advisory Council on Teacher Education, P. - T. A.'s State School Board Association and State Board of Public Instruction) and indicate a lack of confidence.

Dr. Graham replied that such a committee was not intended to displace or interfere with present committees but to increase the cooperative relationship already in force.

Among arguments given by Dr. Graham in favor of the recommendations were: the fact that last year 1,200 teachers were needed for replacements in this state and only 500 were produced; students throughout the nation enrolled for teacher training are few in relation to students in other courses of study; courses set up for certification may be the reason for low enrollment; and the problem is of such magnitude it requires immediate and thoroughgoing study.

He also stated that four-fifths of the courses administered for stu-

dent teachers are done so by departments other than the division of education and therefore such departments should be consulted in designating requirements.

Dr. Graham also pointed out that the second proposal was suggested because the State Advisory Committee which was given birth to in 1948 was to take over major planning and policy of teacher education from a counseling level and there is no college president, academic dean or representative of the humanities, social studies or natural sciences on the committee.

Alumnae House



WEDGWOOD BLUE OR MULBERRY

Commemorative Plates

Order from Alumnae Office, W. C. U. N. C., Greensboro, N. C.

Price \$3.00 each Postpaid

Please specify color and enclose gift card if you wish

Make Check Payable to Alumnae Association, WCUNC

Alumnae House Playing Cards

Canasta or Bridge

\$2.00

Double Deck

Gilt-Edged, Packed

in Attractive Gold Box



ENCHANTMENT QUALITY CARDS with ALUMNAE HOUSE BACKS

Order from Alumnae Office

Make Checks Payable to Alumnae Association